

Genesis[®] sterilization container system



V. Mueller[®]





Table of contents

Genesis® Sterilization Containers and Baskets.....	6–14
Genesis Sterilization Container Accessories.....	15–26
System—Transport and Storage.....	27
Sterilization Cases, Trays and Accessories.....	28–30
Microsurgical Cases and Trays.....	31
Stringers and Mitts.....	32
Holders and Racks.....	33

Genesis sterilization container system

Protect your valuable surgical instrument investment with the V. Mueller® brand Genesis container system—the name you trust in the OR. The Genesis container system was designed with hard coat anodized aluminum to protect and maintain the sterility of your surgical instrumentation. Available in a wide range of sizes, the Genesis container system offers a variety of baskets and accessories to help you organize and speed instrument set-up. The Genesis container system consistently provides a return on your investment and a green alternative to sterilization wrap.

Hard coat anodization



Protects from corrosion, scratches and overall container wear and tear.

Lid lifting handles



Add control to lid and filter inspection.

Stackability



Conveniently provides storage while saving space.

Offset perforations



When locked onto the lid, the retention plate creates a barrier that helps prevent objects from puncturing the filter.



Body-centered carrying handles



Add support by bringing the arms and container close to the center of the body to help relieve stress on the shoulders, back, arms and wrists.

Compression gasket seal



Forms by the interlocking latches to maintain sterility. When opened, the container bounces from the compression between the gasket and container's bottom.

Unique dimensions



Fit more instruments without requiring reorientation in the basket of existing wrapped trays.

Single-use disposable filter



Helps support efficacy for each cycle while maintaining content sterility.

Raised bottom



Keeps the bottom off surfaces and protects filter integrity.

Double-sided data blocks



Offer visibility from either side of the container for easy set identification.

Tamper-evident arrows



Visibly confirm that the container has not been opened and has correctly undergone sterilization.

Genesis container lids are available in a wide range of colors. With colored lids, you can easily identify sets and specialty-specific trays. Order new lids for your current containers in any of the new colors to help you identify specific sets.





Genesis® Sterilization Containers and Baskets

Genesis Containers and Baskets



Top to bottom: Half-, mid- and full-length containers, 5in deep

Cat. No.	Description	Inside Dim. L x W x H	Outside Dim. L x W x H
Half-Length Containers			
CD1-4B	Perforated bottom	9.8in x 11.4in x 4.2in 24.8cm x 28.9cm x 10.7cm	11.8in x 12.4in x 4.5in 30cm x 31.4cm x 11.4cm
CD1-5B	Perforated bottom	9.8in x 11.4in x 5.1in 24.8cm x 28.9cm x 12.9cm	11.8in x 12.4in x 5.3in 30cm x 31.4cm x 13.5cm
CD1-6B	Perforated bottom	9.8in x 11.4in x 5.8in 24.8cm x 28.9cm x 14.8cm	11.8in x 12.4in x 6.1in 30cm x 31.4cm x 15.4cm
CD1-4C	Solid bottom	9.8in x 11.4in x 4.2in 24.8cm x 28.9cm x 10.7cm	11.8in x 12.4in x 4.5in 30cm x 31.4cm x 11.4cm
CD1-5C	Solid bottom	9.8in x 11.4in x 5.1in 24.8cm x 28.9cm x 12.9cm	11.8in x 12.4in x 5.3in 30cm x 31.4cm x 13.5cm
CD1-6C	Solid bottom	9.8in x 11.4in x 5.8in 24.8cm x 28.9cm x 14.8cm	11.8in x 12.4in x 6.1in 30cm x 31.4cm x 15.4cm
Half-Length Baskets - Perforated			
BP1-2A	Standard handles	9.1in x 10.4in x 1.9in 23.1cm x 26.5cm x 4.8cm	9.3in x 10.6in x 2.4in 23.5cm x 27cm x 6.2cm
BP1-3A	Standard handles	9.1in x 10.4in x 2.6in 23.1cm x 26.4cm x 6.6cm	9.3in x 10.6in x 3.2in 23.5cm x 26.9cm x 8.1cm
BP1-4A	Standard handles	9.1in x 10.4in x 3.6in 23.1cm x 26.4cm x 9.1cm	9.3in x 10.6in x 4.2in 23.5cm x 26.9cm x 10.7cm
BP1-2V	Vertical handles	9.1in x 10.4in x 1.9in 23.1cm x 26.4cm x 4.8cm	9.3in x 10.6in x 2.4in 23.5cm x 26.9cm x 6.2cm
BP1-3V	Vertical handles	9.1in x 10.4in x 2.6in 23.1cm x 26.4cm x 6.6cm	9.3in x 10.6in x 3.2in 23.5cm x 26.9cm x 8.1cm
BP1-4V	Vertical handles	9.1in x 10.4in x 3.6in 23.1cm x 26.4cm x 9.1cm	9.3in x 10.6in x 4.2in 23.5cm x 26.9cm x 10.7cm
Half-Length Baskets - Stacking. Perforated with solid sides			
BP1-1AS	Standard handles	8.7in x 10in x 0.8in 22.2cm x 25.4cm x 2cm	8.9in x 10.2in x 1.4in 22.6cm x 25.9cm x 3.5cm
BP1-2AS	Standard handles	8.7in x 10in x 1.8in 22.2cm x 25.4cm x 4.5cm	8.9in x 10.2in x 2.4in 22.6cm x 25.9cm x 6.2cm
BP1-2VS	Vertical handles	8.7in x 10in x 1.8in 22.1cm x 25.4cm x 4.6cm	8.9in x 10.2in x 2.4in 22.6cm x 25.9cm x 6.2cm

Cat. No.	Description	Inside Dim. L x W x H	Outside Dim. L x W x H
Mid-Length Containers			
CD2-4B	Perforated bottom	17.2in x 11.4in x 4.2in 43.6cm x 28.9cm x 10.7cm	19.2in x 12.4in x 4.5in 48.8cm x 31.4cm x 11.4cm
CD2-5B	Perforated bottom	17.2in x 11.4in x 5.1in 43.6cm x 28.9cm x 12.9cm	19.2in x 12.4in x 5.3in 48.8cm x 31.4cm x 13.5cm
CD2-6B	Perforated bottom	17.2in x 11.4in x 5.8in 43.6cm x 28.9cm x 14.8cm	19.2in x 12.4in x 6.1in 48.8cm x 31.4cm x 15.4cm
CD2-8B	Perforated bottom	17.2in x 11.4in x 7.5in 43.6cm x 28.9cm x 19.1cm	19.2in x 12.4in x 7.8in 48.8cm x 31.4cm x 19.8cm
CD2-4C	Solid bottom	17.2in x 11.4in x 4.2in 43.6cm x 28.9cm x 10.7cm	19.2in x 12.4in x 4.5in 48.8cm x 31.4cm x 11.4cm
CD2-5C	Solid bottom	17.2in x 11.4in x 5.1in 43.6cm x 28.9cm x 12.9cm	19.2in x 12.4in x 5.3in 48.8cm x 31.4cm x 13.5cm
CD2-6C	Solid bottom	17.2in x 11.4in x 5.8in 43.6cm x 28.9cm x 14.8cm	19.2in x 12.4in x 6.1in 48.8cm x 31.4cm x 15.4cm
CD2-8C	Solid bottom	17.2in x 11.4in x 7.5in 43.6cm x 28.9cm x 19.1cm	19.2in x 12.4in x 7.8in 48.8cm x 31.4cm x 19.8cm
Mid-Length Baskets - Perforated			
BP2-2A	Standard handles	16.4in x 10.4in x 1.9in 41.5cm x 26.4cm x 4.8cm	16.5in x 10.6in x 2.5in 41.9cm x 26.9cm x 6.4cm
BP2-3A	Standard handles	16.4in x 10.4in x 2.6in 41.5cm x 26.4cm x 6.6cm	16.5in x 10.6in x 3.2in 41.9cm x 26.9cm x 8.2cm
BP2-4A	Standard handles	16.4in x 10.4in x 3.6in 41.5cm x 26.4cm x 9.1cm	16.5in x 10.6in x 4.2in 41.9cm x 26.9cm x 10.7cm
BP2-5A	Standard handles	16.4in x 10.4in x 4.5in 41.5cm x 26.4cm x 11.4cm	16.5in x 10.6in x 5.1in 41.9cm x 26.9cm x 12.8cm
BP2-6A	Standard handles	16.4in x 10.4in x 5.4in 41.5cm x 26.4cm x 13.7cm	16.5in x 10.6in x 6in 41.9cm x 26.9cm x 15.2cm
BP2-2V	Vertical handles	16.4in x 10.4in x 1.8in 41.5cm x 26.4cm x 4.6cm	16.5in x 10.6in x 2.4in 41.9cm x 26.9cm x 6.2cm
BP2-3V	Vertical handles	16.4in x 10.4in x 2.6in 41.5cm x 26.4cm x 6.6cm	16.5in x 10.6in x 3.2in 41.9cm x 26.9cm x 8.2cm
BP2-4V	Vertical handles	16.4in x 10.4in x 3.6in 41.5cm x 26.4cm x 9.1cm	16.5in x 10.6in x 4.2in 41.9cm x 26.9cm x 10.7cm
Mid-Length Baskets - Stacking. Perforated with solid sides			
BP2-1AS	Standard handles	16in x 10in x 0.8in 40.6cm x 25.3cm x 2cm	16.2in x 10.2in x 1.4in 41.2cm x 25.9cm x 3.5cm
BP2-2AS	Standard handles	16in x 10in x 1.8in 40.6cm x 25.3cm x 4.6cm	16.2in x 10.2in x 2.4in 41.2cm x 25.9cm x 6cm
BP2-2VS	Vertical handles	16in x 10in x 1.8in 40.6cm x 25.3cm x 4.6cm	16.2in x 10.2in x 2.4in 41.2cm x 25.9cm x 6cm

Color lids	Lid color	Catalog number extension
	Gold	-GOLD
	Purple	-PURPLE
	Blue	-BLUE
	Green	-GREEN
	Red	-RED
	Black	-BLACK

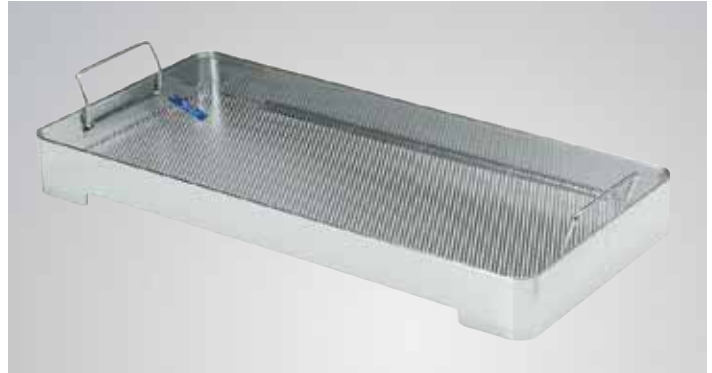
To order any Genesis container with a colored lid, simply add the color extension to the end of the catalog number.

For example, to order the Genesis full-size 6"-deep, perforated bottom container with a gold lid, order catalog number CD3-6B-GOLD.

Containers ordered without a color extension on the catalog number have the standard gray lid.

Genesis Sterilization Containers and Baskets

Cat. No.	Description	Inside Dim. L x W x H	Outside Dim. L x W x H
Full-Length Containers			
CD3-4B	Perforated bottom	21in x 11.4in x 4.2in 53.3cm x 28.9cm x 10.7cm	23.1in x 12.4in x 4.5in 58.6cm x 31.4cm x 11.4cm
CD3-5B	Perforated bottom	21in x 11.4in x 5.1in 53.3cm x 28.9cm x 12.9cm	23.1in x 12.4in x 5.3in 58.6cm x 31.4cm x 13.5cm
CD3-6B	Perforated bottom	21in x 11.4in x 5.8in 53.3cm x 28.9cm x 14.8cm	23.1in x 12.4in x 6.1in 58.6cm x 31.4cm x 15.4cm
CD3-7B	Perforated bottom	21in x 11.4in x 6.8in 53.3cm x 28.9cm x 17.2cm	23.1in x 12.4in x 7in 58.6cm x 31.4cm x 17.9cm
CD3-4C	Solid bottom	21in x 11.4in x 4.2in 53.3cm x 28.9cm x 10.7cm	23.1in x 12.4in x 4.5in 58.6cm x 31.4cm x 11.4cm
CD3-5C	Solid bottom	21in x 11.4in x 5.1in 53.3cm x 28.9cm x 12.9cm	23.1in x 12.4in x 5.3in 58.6cm x 31.4cm x 13.5cm
CD3-6C	Solid bottom	21in x 11.4in x 5.8in 53.3cm x 28.9cm x 14.8cm	23.1in x 12.4in x 6.1in 58.6cm x 31.4cm x 15.4cm
CD3-7C	Solid bottom	21in x 11.4in x 6.8in 53.3cm x 28.9cm x 17.2cm	23.1in x 12.4in x 7in 58.6cm x 31.4cm x 17.9cm
Full-Length Baskets - Perforated			
BP3-2A	Standard handles	20.3in x 10.4in x 1.8in 51.6cm x 26.4cm x 4.6cm	20.5in x 10.6in x 2.4in 52.1cm x 26.9cm x 6.1cm
BP3-3A	Standard handles	20.3in x 10.4in x 2.6in 51.6cm x 26.4cm x 6.6cm	20.5in x 10.6in x 3.2in 52.1cm x 26.9cm x 8.1cm
BP3-4A	Standard handles	20.3in x 10.4in x 3.6in 51.6cm x 26.4cm x 9.1cm	20.5in x 10.6in x 4.2in 52.1cm x 26.9cm x 10.7cm
BP3-5A	Standard handles	20.3in x 10.4in x 4.5in 51.6cm x 26.4cm x 11.4cm	20.5in x 10.6in x 5.1in 52.1cm x 26.9cm x 12.8cm
BP3-2V	Vertical handles	20.3in x 10.4in x 1.8in 51.6cm x 26.4cm x 4.6cm	20.5in x 10.6in x 2.4in 52.1cm x 26.9cm x 6.1cm
BP3-3V	Vertical handles	20.3in x 10.4in x 2.6in 51.6cm x 26.4cm x 6.6cm	20.5in x 10.6in x 3.2in 52.1cm x 26.9cm x 8.1cm
BP3-4V	Vertical handles	20.3in x 10.4in x 3.6in 51.6cm x 26.4cm x 9.1cm	20.5in x 10.6in x 4.2in 52.1cm x 26.9cm x 10.7cm
BP3-5V	Vertical handles	20.3in x 10.4in x 4.5in 51.6cm x 26.4cm x 11.4cm	20.5in x 10.6in x 5.1in 52.1cm x 26.9cm x 12.8cm
Full-Length Baskets - Stacking. Perforated with solid sides			
BP3-1AS	Standard handles	20in x 10in x 0.8in 50.8cm x 25.4cm x 2cm	20.2in x 10.2in x 1.4in 51.3cm x 25.9cm x 3.5cm
BP3-2AS	Standard handles	20in x 10in x 1.8in 50.8cm x 25.4cm x 4.6cm	20.2in x 10.2in x 2.4in 51.3cm x 25.9cm x 6.1cm
BP3-2VS	Vertical handles	20in x 10in x 1.8in 50.8cm x 25.4cm x 4.6cm	20.2in x 10.2in x 2.4in 51.3cm x 25.9cm x 6.1cm



Stacking basket



Standard handle basket



Vertical handle basket



Mid-length baskets

Genesis Sterilization Containers and Baskets



Small narrow container

Cat. No.	Description	Inside Dim. L x W x H	Outside Dim. L x W x H
Small Narrow Containers			
CD4-3B	Perforated bottom	19in x 6.5in x 3.7in 48.3cm x 16.5cm x 9.3cm	20.8in x 7.3in x 3.9in 52.9cm x 18.4cm x 9.9cm
CD4-5B	Perforated bottom	19in x 6.5in x 5in 48.3cm x 16.5cm x 12.7cm	20.8in x 7.3in x 5.2in 52.9cm x 18.4cm x 13.3cm
CD4-3C	Solid bottom	19in x 6.5in x 3.7in 48.3cm x 16.5cm x 9.3cm	20.8in x 7.3in x 3.9in 52.9cm x 18.4cm x 9.9cm
CD4-5C	Solid bottom	19in x 6.5in x 5in 48.3cm x 16.5cm x 12.7cm	20.8in x 7.3in x 5.2in 52.9cm x 18.4cm x 13.3cm
Small Narrow Baskets - Perforated			
BP4-2A	Standard handles	18in x 5.5in x 1.7in 45.7cm x 14cm x 4.3cm	18.3in x 5.8in x 2.3in 46.4cm x 14.6cm x 5.8cm
BP4-4A	Standard handles	18in x 5.5in x 3.4in 45.7cm x 14cm x 8.6cm	18.3in x 5.8in x 4in 46.4cm x 14.6cm x 10.2cm
BP4-2V	Vertical handles	18in x 5.5in x 1.7in 45.7cm x 14cm x 4.3cm	18.3in x 5.8in x 2.3in 46.4cm x 14.6cm x 5.8cm
BP4-4V	Vertical handles	18in x 5.5in x 3.4in 45.7cm x 14cm x 8.6cm	18.3in x 5.8in x 4in 46.4cm x 14.6cm x 10.2cm
Small Narrow Baskets - Stacking. Perforated with solid sides			
BP4-2AS	Standard handles	25.2in x 7.6in x 1.8in 64cm x 19.3cm x 4.6cm	25.4in x 7.8in x 2.4in 64.5cm x 19.7cm x 6cm
BP4-2VS	Vertical handles	25.2in x 7.6in x 1.8in 64cm x 19.3cm x 4.6cm	25.4in x 7.8in x 2.4in 64.5cm x 19.7cm x 6cm



Retractor container

Cat. No.	Description	Inside Dim. L x W x H	Outside Dim. L x W x H
Retractor Containers			
CD6-6B	Perforated bottom	24in x 15.3in x 6.7in 61cm x 38.8cm x 17cm	26.5in x 17in x 6.9in 67.3cm x 43.2cm x 17.6cm
CD6-6C	Solid bottom	24in x 15.3in x 6.7in 61cm x 38.8cm x 17cm	26.5in x 17in x 6.9in 67.3cm x 43.2cm x 17.6cm
Retractor Baskets - Perforated			
BP6-4A	Standard handles	22.8in x 14.9in x 3.6in 57.9cm x 37.8cm x 9.1cm	23in x 15.1in x 4.2in 58.4cm x 38.4cm x 10.7cm
BP6-4V	Vertical handles	22.8in x 14.9in x 3.6in 57.9cm x 37.8cm x 9.1cm	23in x 15.1in x 4.2in 58.4cm x 38.4cm x 10.7cm



Large narrow container with basket

Cat. No.	Description	Inside Dim. L x W x H	Outside Dim. L x W x H
Large Narrow Containers			
CD5-3B	Perforated bottom	26.5in x 8.5in x 4.8in 67.3cm x 21.6cm x 12.1cm	28.1in x 11.2in x 5in 71.4cm x 28.4cm x 12.6cm
CD5-61B	Perforated bottom	26.5in x 8.5in x 6.3in 67.3cm x 21.6cm x 15.9cm	28.1in x 11.2in x 6.4in 71.4cm x 28.4cm x 16.3cm
CD5-3C	Solid bottom	26.5in x 8.5in x 4.8in 67.3cm x 21.6cm x 12.1cm	28.1in x 11.2in x 5in 71.4cm x 28.4cm x 12.6cm
CD5-61C	Solid bottom	26.5in x 8.5in x 6.3in 67.3cm x 21.6cm x 15.9cm	28.1in x 11.2in x 6.4in 71.4cm x 28.4cm x 16.3cm
Large Narrow Baskets - Perforated			
BP5-2A	Standard handles	25.5in x 7.9in x 2.1in 64.8cm x 20.1cm x 5.3cm	25.7in x 8.1in x 2.7in 65.2cm x 20.6cm x 6.9cm
BP5-4A	Standard handles	25.5in x 7.9in x 3.6in 64.8cm x 20.1cm x 9.1cm	25.7in x 8.1in x 4.2in 65.2cm x 20.6cm x 10.7cm
BP5-2V	Vertical handles	25.5in x 7.9in x 2.1in 64.8cm x 20.1cm x 5.3cm	25.7in x 8.1in x 2.7in 65.2cm x 20.6cm x 6.9cm
BP5-4V	Vertical handles	25.5in x 7.9in x 3.6in 64.8cm x 20.1cm x 9.1cm	25.7in x 8.1in x 4.2in 65.2cm x 20.6cm x 10.7cm
Large Narrow Baskets - Stacking. Perforated with solid sides			
BP5-2AS	Standard handles	25.2in x 7.6in x 1.8in 64cm x 19.3cm x 4.6cm	25.4in x 7.8in x 2.4in 64.5cm x 19.7cm x 6cm
BP5-2VS	Vertical handles	25.2in x 7.6in x 1.8in 64cm x 19.3cm x 4.6cm	25.4in x 7.8in x 2.4in 64.5cm x 19.7cm x 6cm



Soiled Transport Containers

Solid lid/solid bottom with gasket. Biohazard symbol on lid.

Cat. No.	Description	Inside Dim. L x W x H	Outside Dim. L x W x H
CR1-6	Half-length	9.8in x 11.4in x 5.8in (24.8cm x 28.9cm x 14.8cm)	11in x 12in x 6in (27.9cm x 30.5cm x 15.2cm)
CR2-6	Mid-length	17.2in x 11.4in x 5.8in (43.6cm x 28.9cm x 14.8cm)	19in x 12in x 6in (48.3cm x 30.5cm x 15.2cm)
CR3-6	Full-length	21in x 11.4in x 5.8in (53.3cm x 28.9cm x 14.8cm)	23.1in x 12.4in x 6.1in (56cm x 31.4cm x 15.4cm)

Genesis Sterilization Containers and Baskets



Extra-long container

Cat. No.	Description	Inside Dim. L x W x H	Outside Dim. L x W x H
Extra-Long Containers			
CD7-5B	Perforated bottom	23in x 11.4in x 5.7in 58.4cm x 28.9cm x 14.4cm	25.2in x 12.4in x 5.9in 63.9cm x 31.6cm x 15.1cm
CD7-6B	Perforated bottom	23in x 11.4in x 6.4in 58.4cm x 28.9cm x 16.3cm	25.2in x 12.4in x 6.7in 63.9cm x 31.6cm x 17cm
CD7-9B	Perforated bottom	23in x 11.4in x 8.2in 58.4cm x 28.9cm x 20.8cm	25.2in x 12.4in x 8.4in 63.9cm x 31.6cm x 21.4cm
CD7-5C	Solid bottom	23in x 11.4in x 5.7in 58.4cm x 28.9cm x 14.4cm	25.2in x 12.5in x 5.9in 63.9cm x 31.6cm x 15.1cm
CD7-6C	Solid bottom	23in x 11.4in x 6.4in 58.4cm x 28.9cm x 16.3cm	25.2in x 12.4in x 6.7in 63.9cm x 31.6cm x 17cm
CD7-9C	Solid bottom	23in x 11.4in x 8.2in 58.4cm x 28.9cm x 20.8cm	25.2in x 12.4in x 8.4in 63.9cm x 31.6cm x 21.4cm
Extra-Long Baskets - Perforated			
BP7-3A	Standard handles	22.3in x 10.4in x 2.6in 56.6cm x 26.4cm x 6.6cm	22.5in x 10.6in x 3.2in 57.2cm x 26.9cm x 8.1cm
BP7-4A	Standard handles	22.3in x 10.4in x 3.6in 56.6cm x 26.4cm x 9.1cm	22.5in x 10.6in x 4.2in 57.2cm x 26.9cm x 10.7cm
Extra-Long Baskets - Stacking, Perforated with solid sides			
BP7-2AS	Standard handles	22.1in x 10in x 1.8in 56.1cm x 25.4cm x 4.6cm	22.3in x 10.2in x 2.4in 56.5cm x 25.9cm x 6.1cm
BP7-4AS	Standard handles	22.1in x 10in x 3.4in 56.1cm x 25.4cm x 8.6cm	22.3in x 10.2in x 4in 56.5cm x 25.9cm x 10.2cm



Genesis Lifting Platforms

Solid sides. Perforated bottom.

Cat. No.	Description	Inside Dim. L x W x H	Outside Dim. L x W x H
LP3-1	Lifting Platform, Full	20.3in x 10.4in x 0.75in (51.5cm x 26.4cm x 1.9cm)	20.5in x 10.6in x 1.3in (52.1cm x 27cm x 3.4cm)
LP7-1	Lifting Platform, XL (short handles)	22.3in x 10.4in x 0.7in (56.6cm x 26.4cm x 1.8cm)	22.5in x 10.6in x 1.3 (57.2cm x 27cm x 3.4cm)
LP7-2	Lifting Platform, XL (long handles)	22.3in x 10.4in x 0.7in (56.6cm x 26.4cm x 1.8cm)	22.5in x 10.6in x 1.3 (57.2cm x 27cm x 3.4cm)



Deep lid container

Genesis Deep Lid Containers

Cat. No.	Description	Inside Dim. L x W x H	Outside Dim. L x W x H
Half-Length			
CD1-7BDL	Perforated bottom	9.8in x 11.4in x 6.7in 24.8cm x 28.9cm x 17cm	11.9in x 12.5in x 7.5in 30.1cm x 31.7cm x 19.1cm
CD1-7CDL	Solid bottom	9.8in x 11.4in x 6.7in 24.8cm x 28.9cm x 17cm	11.9in x 12.5in x 7.5in 30.1cm x 31.7cm x 19.1cm
CD1-8BDL	Perforated bottom	9.8in x 11.4in x 7.5in 24.8cm x 28.9cm x 18.9cm	11.9in x 12.5in x 8.3in 30.1cm x 31.7cm x 21cm
Mid-Length			
CD2-10BDL	Perforated bottom	17.2in x 11.4in x 9.2in 43.6cm x 28.9cm x 23.3cm	19.2in x 12.5in x 9.4in 48.8cm x 31.6cm x 23.9cm
CD2-10CDL	Solid bottom	17.2in x 11.4in x 9.2in 43.6cm x 28.9cm x 23.3cm	19.2in x 12.5in x 9.4in 48.8cm x 31.6cm x 23.9cm
CD2-7BDL	Perforated bottom	17.2in x 11.4in x 6.7in 43.6cm x 28.9cm x 17cm	19.2in x 12.5in x 7in 48.8cm x 31.6cm x 17.7cm
CD2-7CDL	Solid bottom	17.2in x 11.4in x 6.7in 43.6cm x 28.9cm x 17cm	19.2in x 12.5in x 7in 48.8cm x 31.6cm x 17.7cm
Full-Length			
CD3-8BDL	Perforated bottom	21in x 11.4in x 7.6in 53.3cm x 28.9cm x 19.2cm	23.1in x 12.5in x 7.8in 58.7cm x 31.7cm x 19.8cm
CD3-8CDL	Solid bottom	21in x 11.4in x 7.6in 53.3cm x 28.9cm x 19.2cm	23.1in x 12.5in x 7.8in 58.7cm x 31.7cm x 19.8cm
CD3-9BDL	Perforated bottom	21in x 11.4in x 8.5in 53.3cm x 28.9cm x 21.6cm	23.1in x 12.5in x 8.8in 58.7cm x 31.7cm x 22.2cm
CD3-9CDL	Solid bottom	21in x 11.4in x 8.5in 53.3cm x 28.9cm x 21.6cm	23.1in x 12.5in x 8.8in 58.7cm x 31.7cm x 22.2cm
Lid Only			
DL1-1	Fits half-length bottom		
DL2-1	Fits mid-length bottom		
DL3-1	Fits full-length bottom		

Color lids	Lid color	Catalog number extension
	Gold	-GOLD
	Purple	-PURPLE
	Blue	-BLUE
	Green	-GREEN
	Red	-RED
	Black	-BLACK

To order any Genesis container with a colored lid, simply add the color extension to the end of the catalog number.

For example, to order the Genesis full-size 6"-deep, perforated bottom container with a gold lid, order catalog number CD3-6B-GOLD.

Containers ordered without a color extension on the catalog number have the standard gray lid.

Genesis Sterilization Containers and Baskets



Mini container and basket

Cat. No.	Description	Inside Dim. L x W x H	Outside Dim. L x W x H
Mini Containers			
CD0-3B	Perforated bottom	9.2in x 5.1in x 3.1in 23.3cm x 12.9cm x 7.8cm	10.2in x 7.2in x 3.2in 26cm x 18.3cm x 8cm
CD0-3C	Solid bottom	9.2in x 5.1in x 3.1in 23.3cm x 12.9cm x 7.8cm	10.2in x 7.2in x 3.2in 26cm x 18.3cm x 8cm
Mini Basket - Perforated			
BP0-1A		8.9in x 4.7in x 1.6in 22.6cm x 11.9cm x 4cm	9.1in x 5in x 1.6in 23.2cm x 12.7cm x 4.1cm



Quarter-length container and basket

Cat. No.	Description	Inside Dim. L x W x H	Outside Dim. L x W x H
Quarter-Length Containers			
CD0-4B	Perforated bottom	7.6in x 11.6in x 3.5in 19.4cm x 29.5cm x 8.9cm	9.5in x 12.4in x 3.8in 24cm x 31.4cm x 9.5cm
CD0-4C	Solid bottom	7.6in x 11.6in x 3.5in 19.4cm x 29.5cm x 8.9cm	9.5in x 12.4in x 3.8in 24cm x 31.4cm x 9.5cm
Quarter-Length Baskets - Perforated			
BP0-2A	Standard handles	6.8in x 10.9in x 1.8in 17.3cm x 27.7cm x 4.7cm	7in x 11.1in x 2.4in 17.8cm x 28.2cm x 6.2cm
BP0-2V	Vertical handles	6.8in x 10.9in x 1.8in 17.3cm x 27.7cm x 4.7cm	7in x 11.1in x 2.4in 17.8cm x 28.2cm x 6.2cm



Half-length, full-length and small narrow STERRAD-system compatible containers

STERRAD® System Compatible Containers

Specially marked with plasma pink gaskets, handles and ID tags. Uses standard Genesis baskets.

Cat. No.	Inside Dim. L x W x H	Outside Dim. L x W x H
Quarter-Length		
CD0-4ST	7.6in x 11.6in x 3.5in 19.4cm x 29.5cm x 8.9cm	9.5in x 12.4in x 3.8in 24cm x 31.4cm x 9.5cm
Half-Length		
CD1-4ST	9.8in x 11.4in x 4.2in 24.8cm x 28.9cm x 10.7cm	11.8in x 12.4in x 4.5in 30cm x 31.4cm x 11.4cm
CD1-5ST	9.8in x 11.4in x 5.1in 24.8cm x 28.9cm x 12.9cm	11.8in x 12.4in x 5.3in 30cm x 31.4cm x 13.5cm
CD1-6ST	9.8in x 11.4in x 5.8in 24.8cm x 28.9cm x 14.8cm	11.8in x 12.4in x 6.1in 30cm x 31.4cm x 15.4cm
Mid-Length		
CD2-4ST	17.2in x 11.4in x 4.2in 43.6cm x 28.9cm x 10.7cm	19.2in x 12.4in x 4.5in 48.8cm x 31.4cm x 11.4cm
CD2-5ST	17.2in x 11.4in x 5.1in 43.6cm x 28.9cm x 12.9cm	19.2in x 12.4in x 5.3in 48.8cm x 31.4cm x 13.5cm
CD2-6ST	17.2in x 11.4in x 5.8in 43.6cm x 28.9cm x 14.8cm	19.2in x 12.4in x 6.1in 48.8cm x 31.4cm x 15.4cm
CD2-8ST	17.2in x 11.4in x 7.5in 43.6cm x 28.9cm x 19.1cm	19.2in x 12.4in x 7.8in 48.8cm x 31.4cm x 19.8cm
Full-Length		
CD3-4ST	21in x 11.4in x 4.2in 53.3cm x 28.9cm x 10.7cm	23.1in x 12.4in x 4.5in 58.6cm x 31.4cm x 11.4cm
CD3-5ST	21in x 11.4in x 5.1in 53.3cm x 28.9cm x 12.9cm	23.1in x 12.4in x 5.3in 58.6cm x 31.4cm x 13.5cm
CD3-6ST	21in x 11.4in x 5.8in 53.3cm x 28.9cm x 14.8cm	23.1in x 12.4in x 6.1in 58.6cm x 31.4cm x 15.4cm
CD3-7ST	21in x 11.4in x 6.8in 53.3cm x 28.9cm x 17.2cm	23.1in x 12.4in x 7in 58.6cm x 31.4cm x 17.9cm
Small Narrow		
CD4-3ST	19in x 6.5in x 3.7in 48.3cm x 16.5cm x 9.3cm	20.8in x 7.3in x 3.9in 52.9cm x 18.4cm x 9.9cm
CD4-5ST	19in x 6.5in x 5in 48.3cm x 16.5cm x 12.7cm	20.8in x 7.3in x 5.2in 52.9cm x 18.4cm x 13.3cm
Large Narrow		
CD5-3ST	26.5in x 8.5in x 4.8in 67.3cm x 21.6cm x 12.1cm	28.1in x 11.2in x 5in 71.4cm x 28.4cm x 12.6cm
CD5-61ST	26.5in x 8.5in x 6.3in 67.3cm x 21.6cm x 15.9cm	28.1in x 11.2in x 6.4in 71.4cm x 28.4cm x 16.3cm
Mini		
CD0-3ST	9.2in x 5.1in x 3.1in 23.3cm x 12.9cm x 7.8cm	10.2in x 7.2in x 3.2in 26cm x 18.3cm x 8cm

Genesis Sterilization Containers and Baskets

Genesis colored lids

Genesis container lids are available in a wide range of colors to help you easily identify sets and specialty-specific trays. Use this chart to new, colored lids for your existing containers.

Cat. No.	Description
CL1394-GOLD	Genesis Lid, Mini, Gold, with Retention Plate
CL1394-PURPLE	Genesis Lid, Mini, Purple, with Retention Plate
CL1394-BLUE	Genesis Lid, Mini, Blue, with Retention Plate
CL1394-GREEN	Genesis Lid, Mini, Green, with Retention Plate
CL1394-RED	Genesis Lid, Mini, Red, with Retention Plate
CL1394-BLACK	Genesis Lid, Mini, Black, with Retention Plate
CL1187-GOLD	Genesis Lid, Qtr, Gold, with Retention Plate
CL1187-PURPLE	Genesis Lid, Qtr, Purple, with Retention Plate
CL1187-BLUE	Genesis Lid, Qtr, Blue, with Retention Plate
CL1187-GREEN	Genesis Lid, Qtr, Green, with Retention Plate
CL1187-RED	Genesis Lid, Qtr, Red, with Retention Plate
CL1187-BLACK	Genesis Lid, Qtr, Black, with Retention Plate
CL1041-GOLD	Genesis Lid, Half, Gold, with Retention Plate
CL1041-PURPLE	Genesis Lid, Half, Purple, with Retention Plate
CL1041-BLUE	Genesis Lid, Half, Blue, with Retention Plate
CL1041-GREEN	Genesis Lid, Half, Green, with Retention Plate
CL1041-RED	Genesis Lid, Half, Red, with Retention Plate
CL1041-BLACK	Genesis Lid, Half, Black, with Retention Plate
CL1043-GOLD	Genesis Lid, Mid, Gold, with Retention Plate
CL1043-PURPLE	Genesis Lid, Mid, Purple, with Retention Plate
CL1043-BLUE	Genesis Lid, Mid, Blue, with Retention Plate
CL1043-GREEN	Genesis Lid, Mid, Green, with Retention Plate
CL1043-RED	Genesis Lid, Mid, Red, with Retention Plate
CL1043-BLACK	Genesis Lid, Mid, Black, with Retention Plate
CL1039-GOLD	Genesis Lid, Full, Gold, with Retention Plate
CL1039-PURPLE	Genesis Lid, Full, Purple, with Retention Plate
CL1039-BLUE	Genesis Lid, Full, Blue, with Retention Plate
CL1039-GREEN	Genesis Lid, Full, Green, with Retention Plate
CL1039-RED	Genesis Lid, Full, Red, with Retention Plate
CL1039-BLACK	Genesis Lid, Full, Black, with Retention Plate
CL1381-GOLD	Genesis Lid, Sm Narrow, Gold, with Retention Plate
CL1381-PURPLE	Genesis Lid, Sm Narrow, Purple, with Retention Plate
CL1381-BLUE	Genesis Lid, Sm Narrow, Blue, with Retention Plate
CL1381-GREEN	Genesis Lid, Sm Narrow, Green, with Retention Plate
CL1381-RED	Genesis Lid, Sm Narrow, Red, with Retention Plate
CL1381-BLACK	Genesis Lid, Sm Narrow, Black, with Retention Plate
CL1769-GOLD	Genesis Lid, Lg Nrw Shallow, Gold, with Retention Plate
CL1769-PURPLE	Genesis Lid, Lg Nrw Shallow, Purple, with Retention Plate
CL1769-BLUE	Genesis Lid, Lg Nrw Shallow, Blue, with Retention Plate
CL1769-GREEN	Genesis Lid, Lg Nrw Shallow, Green, with Retention Plate
CL1769-RED	Genesis Lid, Lg Nrw Shallow, Red, with Retention Plate
CL1769-BLACK	Genesis Lid, Lg Nrw Shallow, Black, with Retention Plate
CL1388-GOLD	Genesis Lid, Lg Narrow, Gold, with Retention Plate
CL1388-PURPLE	Genesis Lid, Lg Narrow, Purple, with Retention Plate
CL1388-BLUE	Genesis Lid, Lg Narrow, Blue, with Retention Plate
CL1388-GREEN	Genesis Lid, Lg Narrow, Green, with Retention Plate
CL1388-RED	Genesis Lid, Lg Narrow, Red, with Retention Plate
CL1388-BLACK	Genesis Lid, Lg Narrow, Black, with Retention Plate
CL1047-GOLD	Genesis Lid, Retractor, Gold, with Retention Plate
CL1047-PURPLE	Genesis Lid, Retractor, Purple, with Retention Plate
CL1047-BLUE	Genesis Lid, Retractor, Blue, with Retention Plate
CL1047-GREEN	Genesis Lid, Retractor, Green, with Retention Plate
CL1047-RED	Genesis Lid, Retractor, Red, with Retention Plate



Cat. No.	Description
CL1047-BLACK	Genesis Lid, Retractor, Black, with Retention Plate
CL1850-GOLD	Genesis Lid, XL Standard, Gold, with Retention Plate
CL1850-PURPLE	Genesis Lid, XL Standard, Purple, with Retention Plate
CL1850-BLUE	Genesis Lid, XL Standard, Blue, with Retention Plate
CL1850-GREEN	Genesis Lid, XL Standard, Green, with Retention Plate
CL1850-RED	Genesis Lid, XL Standard, Red, with Retention Plate
CL1850-BLACK	Genesis Lid, XL Standard, Black, with Retention Plate
CL1851-GOLD	Genesis Lid, XL 2-1/4", Gold, with Retention Plate
CL1851-PURPLE	Genesis Lid, XL 2-1/4", Purple, with Retention Plate
CL1851-BLUE	Genesis Lid, XL 2-1/4", Blue, with Retention Plate
CL1851-GREEN	Genesis Lid, XL 2-1/4", Green, with Retention Plate
CL1851-RED	Genesis Lid, XL 2-1/4", Red, with Retention Plate
CL1851-BLACK	Genesis Lid, XL 2-1/4", Black, with Retention Plate
CL1853-GOLD	Genesis Lid, XL 3-1/2", Gold, with Retention Plate
CL1853-PURPLE	Genesis Lid, XL 3-1/2", Purple, with Retention Plate
CL1853-BLUE	Genesis Lid, XL 3-1/2", Blue, with Retention Plate
CL1853-GREEN	Genesis Lid, XL 3-1/2", Green, with Retention Plate
CL1853-RED	Genesis Lid, XL 3-1/2", Red, with Retention Plate
CL1853-BLACK	Genesis Lid, XL 3-1/2", Black, with Retention Plate
CL1693-GOLD	Genesis Lid, Half, Deep, Gold, with Retention Plate
CL1693-PURPLE	Genesis Lid, Half, Deep, Purple, with Retention Plate
CL1693-BLUE	Genesis Lid, Half, Deep, Blue, with Retention Plate
CL1693-GREEN	Genesis Lid, Half, Deep, Green, with Retention Plate
CL1693-RED	Genesis Lid, Half, Deep, Red, with Retention Plate
CL1693-BLACK	Genesis Lid, Half, Deep, Black, with Retention Plate
CL1694-GOLD	Genesis Lid, Mid, Deep, Gold, with Retention Plate
CL1694-PURPLE	Genesis Lid, Mid, Deep, Purple, with Retention Plate
CL1694-BLUE	Genesis Lid, Mid, Deep, Blue, with Retention Plate
CL1694-GREEN	Genesis Lid, Mid, Deep, Green, with Retention Plate
CL1694-RED	Genesis Lid, Mid, Deep, Red, with Retention Plate
CL1694-BLACK	Genesis Lid, Mid, Deep, Black, with Retention Plate
CL1695-GOLD	Genesis Lid, Full, Deep, Gold, with Retention Plate
CL1695-PURPLE	Genesis Lid, Full, Deep, Purple, with Retention Plate
CL1695-BLUE	Genesis Lid, Full, Deep, Blue, with Retention Plate
CL1695-GREEN	Genesis Lid, Full, Deep, Green, with Retention Plate
CL1695-RED	Genesis Lid, Full, Deep, Red, with Retention Plate
CL1695-BLACK	Genesis Lid, Full, Deep, Black, with Retention Plate

Genesis Sterilization Containers and Baskets

Genesis Sterilization Containers - Basket Selection Guide

Genesis containers can be easily configured to accommodate a wide variety of instruments with perforated baskets and stacking baskets. This chart has been designed to help you make selections based on the following guidelines:

- The height of the basket should be two inches less than the height of the container (e.g. 6in container height with 4in basket height)
- When stacking baskets are used the combined height of the baskets can be one inch less than the container height
- The combinations below will maximize the usable space inside the containers
- Vertical handle baskets (basket code suffix is "V" or "VS") can be used in place of standard "A" or "AS" baskets

Container	Basket	Basket Inside Dim. L x W x H	Basket Outside Dim. L x W x H
CD0-3* Mini	BP0-1A	8.9in x 4.7in x 1.6in (22.6cm x 11.9cm x 4cm)	9.1in x 5in x 1.6in (23.2cm x 12.7cm x 4.1cm)
CD0-4* Quarter length	BP0-2A	6.8in x 10.9in x 1.8in (17.3cm x 27.7cm x 4.7cm)	7in x 11.1in x 2.4in (17.8cm x 28.2cm x 6.2cm)
CD1-4* Half length	BP1-2A	9.1in x 10.4in x 1.9in (23cm x 26.5cm x 4.8cm)	9.3in x 10.6in x 2.4in (23.5cm x 27cm x 6.2cm)
CD1-5* Half length	BP1-3A alone	9.1in x 10.4in x 2.6in (23cm x 26.5cm x 6.6cm)	9.3in x 10.6in x 3.2in (23.5cm x 26.9cm x 8.1cm)
	or with BP1-1AS stacking	8.7in x 10in x 0.8in (22.2cm x 25.4cm x 2cm)	8.9in x 10.2in x 1.4in (22.7cm x 25.9cm x 3.5cm)
	BP1-2A with	9.1in x 10.4in x 1.9in (23cm x 26.5cm x 4.8cm)	9.3in x 10.6in x 2.4in (23.5cm x 27cm x 6.2cm)
	BP1-1AS stacking	8.7in x 10in x 0.8in (22.2cm x 25.4cm x 2cm)	8.9in x 10.2in x 1.4in (22.7cm x 25.9cm x 3.5cm)
	or BP1-2AS stacking	8.7in x 10in x 1.8in (22.2cm x 25.4cm x 4.5cm)	8.9in x 10.2in x 2.4in (22.7cm x 25.9cm x 6cm)
CD1-6* Half length	BP1-4A alone	9.1in x 10.4in x 3.6in (23.1cm x 26.4cm x 9.1cm)	9.3in x 10.6in x 4.2in (23.5cm x 26.9cm x 10.7cm)
	or with BP1-1AS stacking	8.7in x 10in x 0.8in (22.2cm x 25.4cm x 2cm)	8.9in x 10.2in x 1.4in (22.7cm x 25.9cm x 3.5cm)
	BP1-3A with	9.1in x 10.4in x 2.6in (23cm x 26.5cm x 6.6cm)	9.3in x 10.6in x 3.2in (23.5cm x 26.9cm x 8.1cm)
	BP1-1AS stacking	8.7in x 10in x 0.8in (22.2cm x 25.4cm x 2cm)	8.9in x 10.2in x 1.4in (22.7cm x 25.9cm x 3.5cm)
	or BP1-2AS stacking	8.7in x 10in x 1.8in (22.2cm x 25.4cm x 4.5cm)	8.9in x 10.2in x 2.4in (22.7cm x 25.9cm x 6cm)
	BP1-2A alone	9.1in x 10.4in x 1.9in (23cm x 26.5cm x 4.8cm)	9.3in x 10.6in x 2.4in (23.5cm x 27cm x 6.2cm)
	or with BP1-1AS stacking	8.7in x 10in x 0.8in (22.2cm x 25.4cm x 2cm)	8.9in x 10.2in x 1.4in (22.7cm x 25.9cm x 3.5cm)
or BP1-2AS stacking	8.7in x 10in x 1.8in (22.2cm x 25.4cm x 4.5cm)	8.9in x 10.2in x 2.4in (22.7cm x 25.9cm x 6cm)	
CD1-7* DL ^{NS} Deep lid, Half length*	BP1-3A alone	9.1in x 10.4in x 2.6in (23cm x 26.5cm x 6.6cm)	9.3in x 10.6in x 3.2in (23.5cm x 26.9cm x 8.1cm)
	or with BP1-1AS stacking	8.7in x 10in x 0.8in (22.2cm x 25.4cm x 2cm)	8.9in x 10.2in x 1.4in (22.7cm x 25.9cm x 3.5cm)
	or BP1-2AS stacking	8.7in x 10in x 1.8in (22.2cm x 25.4cm x 4.5cm)	8.9in x 10.2in x 2.4in (22.7cm x 25.9cm x 6cm)
	BP1-2A with	9.1in x 10.4in x 1.9in (23cm x 26.5cm x 4.8cm)	9.3in x 10.6in x 2.4in (23.5cm x 27cm x 6.2cm)
	BP1-1AS stacking	8.7in x 10in x 0.8in (22.2cm x 25.4cm x 2cm)	8.9in x 10.2in x 1.4in (22.7cm x 25.9cm x 3.5cm)
CD1-8* DL ^{NS} Deep lid, Half length*	or BP1-2AS stacking	8.7in x 10in x 1.8in (22.2cm x 25.4cm x 4.5cm)	8.9in x 10.2in x 2.4in (22.7cm x 25.9cm x 6cm)
	BP1-4A alone	9.1in x 10.4in x 3.6in (23.1cm x 26.4cm x 9.1cm)	9.3in x 10.6in x 4.2in (23.5cm x 26.9cm x 10.7cm)
	or with BP1-1AS stacking	8.7in x 10in x 0.8in (22.2cm x 25.4cm x 2cm)	8.9in x 10.2in x 1.4in (22.7cm x 25.9cm x 3.5cm)
	or BP1-2AS stacking	8.7in x 10in x 1.8in (22.2cm x 25.4cm x 4.5cm)	8.9in x 10.2in x 2.4in (22.7cm x 25.9cm x 6cm)
	BP1-3A with	9.1in x 10.4in x 2.6in (23cm x 26.5cm x 6.6cm)	9.3in x 10.6in x 3.2in (23.5cm x 26.9cm x 8.1cm)
	BP1-1AS stacking	8.7in x 10in x 0.8in (22.2cm x 25.4cm x 2cm)	8.9in x 10.2in x 1.4in (22.7cm x 25.9cm x 3.5cm)
	or BP1-2AS stacking	8.7in x 10in x 1.8in (22.2cm x 25.4cm x 4.5cm)	8.9in x 10.2in x 2.4in (22.7cm x 25.9cm x 6cm)
CD2-4* Mid length	BP2-2A	16.4in x 10.4in x 1.9in (41.5cm x 26.4cm x 4.8cm)	16.5in x 10.6in x 2.5in (41.9cm x 26.9cm x 6.4cm)
	BP2-3A alone	16.4in x 10.4in x 2.6in (41.5cm x 26.4cm x 6.6cm)	16.5in x 10.6in x 3.2in (41.9cm x 26.9cm x 8.2cm)
	or with BP2-1AS	16in x 10in x 0.8in (40.6cm x 25.3cm x 2cm)	16.2in x 10.2in x 1.4in (41.2cm x 25.9cm x 3.5cm)
	BP2-2A with	16.4in x 10.4in x 1.9in (41.5cm x 26.4cm x 4.8cm)	16.5in x 10.6in x 2.5in (41.9cm x 26.9cm x 6.4cm)
	BP2-1AS stacking	16in x 10in x 0.8in (40.6cm x 25.3cm x 2cm)	16.2in x 10.2in x 1.4in (41.2cm x 25.9cm x 3.5cm)
CD2-5* Mid length	or BP2-2A stacking	16.4in x 10.4in x 1.9in (41.5cm x 26.4cm x 4.8cm)	16.5in x 10.6in x 2.5in (41.9cm x 26.9cm x 6.4cm)
	BP2-4A alone	16.4in x 10.4in x 3.6in (41.5cm x 26.4cm x 9.1cm)	16.5in x 10.6in x 4.2in (41.9cm x 26.9cm x 10.7cm)
	or with BP2-1AS stacking	16in x 10in x 0.8in (40.6cm x 25.3cm x 2cm)	16.2in x 10.2in x 1.4in (41.2cm x 25.9cm x 3.5cm)
	BP2-3A with	16.4in x 10.4in x 2.6in (41.5cm x 26.4cm x 6.6cm)	16.5in x 10.6in x 3.2in (41.9cm x 26.9cm x 8.2cm)
	BP2-1AS stacking	16in x 10in x 0.8in (40.6cm x 25.3cm x 2cm)	16.2in x 10.2in x 1.4in (41.2cm x 25.9cm x 3.5cm)
	or BP2-2AS stacking	16in x 10in x 1.8in (40.6cm x 25.3cm x 4.6cm)	16.2in x 10.2in x 2.4in (41.1cm x 25.9cm x 6cm)
	BP2-2A with	16.4in x 10.4in x 1.9in (41.5cm x 26.4cm x 4.8cm)	16.5in x 10.6in x 2.5in (41.9cm x 26.9cm x 6.4cm)
BP2-2AS stacking	16in x 10in x 1.8in (40.6cm x 25.3cm x 4.6cm)	16.2in x 10.2in x 2.4in (41.1cm x 25.9cm x 6cm)	
or BP2-1AS stacking	16in x 10in x 0.8in (40.6cm x 25.3cm x 2cm)	16.2in x 10.2in x 1.4in (41.2cm x 25.9cm x 3.5cm)	

Genesis Sterilization Containers and Baskets

Basket Selection Guide (continued)

Container	Basket	Basket Inside Dim. L x W x H	Basket Outside Dim. L x W x H	
CD2-8* Mid length	BP2-6A	16.4in x 10.4in x 5.4in (41.5cm x 26.4cm x 13.7cm)	16.5in x 10.6in x 6in (41.9cm x 26.9cm x 15.2cm)	
	BP2-4A with	16.4in x 10.4in x 3.6in (41.5cm x 26.4cm x 9.1cm)	16.5in x 10.6in x 4.2in (41.9cm x 26.9cm x 10.7cm)	
	BP2-1AS stacking	16in x 10in x 0.8in (40.6cm x 25.3cm x 2cm)	16.2in x 10.2in x 1.4in (41.2cm x 25.9cm x 3.5cm)	
	or BP2-2AS stacking	16in x 10in x 1.8in (40.6cm x 25.3cm x 4.6cm)	16.2in x 10.2in x 2.4in (41.1cm x 25.9cm x 6cm)	
	BP2-3A with	16.4in x 10.4in x 2.6in (41.5cm x 26.4cm x 6.6cm)	16.5in x 10.6in x 3.2in (41.9cm x 26.9cm x 8.2cm)	
	BP2-2AS stacking	16in x 10in x 1.8in (40.6cm x 25.3cm x 4.6cm)	16.2in x 10.2in x 2.4in (41.1cm x 25.9cm x 6cm)	
	or BP2-1AS stacking	16in x 10in x 0.8in (40.6cm x 25.3cm x 2cm)	16.2in x 10.2in x 1.4in (41.2cm x 25.9cm x 3.5cm)	
	BP2-5A alone	16.4in x 10.4in x 4.5in (41.5cm x 26.4cm x 11.4cm)	16.5in x 10.6in x 5.1in (41.9cm x 26.9cm x 12.8cm)	
	or with BP2-1AS stacking	16in x 10in x 0.8in (40.6cm x 25.3cm x 2cm)	16.2in x 10.2in x 1.4in (41.2cm x 25.9cm x 3.5cm)	
	or BP2-2AS stacking	16in x 10in x 1.8in (40.6cm x 25.3cm x 4.6cm)	16.2in x 10.2in x 2.4in (41.1cm x 25.9cm x 6cm)	
	Two BP2-2AS with	16in x 10in x 1.8in (40.6cm x 25.3cm x 4.6cm)	16.2in x 10.2in x 2.4in (41.1cm x 25.9cm x 6cm)	
	BP2-2A in between	16.4in x 10.4in x 1.9in (41.5cm x 26.4cm x 4.8cm)	16.5in x 10.6in x 2.5in (41.9cm x 26.9cm x 6.4cm)	
CD2-7* DL ^{NS} Deep lid, Mid length	BP2-3A alone	16.4in x 10.4in x 2.6in (41.5cm x 26.4cm x 6.6cm)	16.5in x 10.6in x 3.2in (41.9cm x 26.9cm x 8.2cm)	
	or with BP2-2AS stacking	16in x 10in x 1.8in (40.6cm x 25.3cm x 4.6cm)	16.2in x 10.2in x 2.4in (41.1cm x 25.9cm x 6cm)	
	or BP2-1AS stacking	16in x 10in x 0.8in (40.6cm x 25.3cm x 2cm)	16.2in x 10.2in x 1.4in (41.2cm x 25.9cm x 3.5cm)	
	BP2-2A with	16.4in x 10.4in x 1.9in (41.5cm x 26.4cm x 4.8cm)	16.5in x 10.6in x 2.5in (41.9cm x 26.9cm x 6.4cm)	
	BP2-2AS stacking	16in x 10in x 1.8in (40.6cm x 25.3cm x 4.6cm)	16.2in x 10.2in x 2.4in (41.1cm x 25.9cm x 6cm)	
CD2-10* DL ^{NS} Deep lid, Mid length*	or BP2-1AS stacking	16in x 10in x 0.8in (40.6cm x 25.3cm x 2cm)	16.2in x 10.2in x 1.4in (41.2cm x 25.9cm x 3.5cm)	
	BP2-6A alone	16.4in x 10.4in x 5.4in (41.5cm x 26.4cm x 13.7cm)	16.5in x 10.6in x 6in (41.9cm x 26.9cm x 15.2cm)	
	or with BP2-2AS stacking	16in x 10in x 1.8in (40.6cm x 25.3cm x 4.6cm)	16.2in x 10.2in x 2.4in (41.1cm x 25.9cm x 6cm)	
	or BP2-1AS stacking	16in x 10in x 0.8in (40.6cm x 25.3cm x 2cm)	16.2in x 10.2in x 1.4in (41.2cm x 25.9cm x 3.5cm)	
	BP2-5A alone	16.4in x 10.4in x 4.5in (41.5cm x 26.4cm x 11.4cm)	16.5in x 10.6in x 5.1in (41.9cm x 26.9cm x 12.8cm)	
	or with BP2-1AS stacking	16in x 10in x 0.8in (40.6cm x 25.3cm x 2cm)	16.2in x 10.2in x 1.4in (41.2cm x 25.9cm x 3.5cm)	
	or BP2-2AS stacking	16in x 10in x 1.8in (40.6cm x 25.3cm x 4.6cm)	16.2in x 10.2in x 2.4in (41.1cm x 25.9cm x 6cm)	
	Two BP2-2AS with	16in x 10in x 1.8in (40.6cm x 25.3cm x 4.6cm)	16.2in x 10.2in x 2.4in (41.1cm x 25.9cm x 6cm)	
	BP2-2A in between	16.4in x 10.4in x 1.9in (41.5cm x 26.4cm x 4.8cm)	16.5in x 10.6in x 2.5in (41.9cm x 26.9cm x 6.4cm)	
	BP2-4A with	16.4in x 10.4in x 3.6in (41.5cm x 26.4cm x 9.1cm)	16.5in x 10.6in x 4.2in (41.9cm x 26.9cm x 10.7cm)	
	BP2-1AS stacking	16in x 10in x 0.8in (40.6cm x 25.3cm x 2cm)	16.2in x 10.2in x 1.4in (41.2cm x 25.9cm x 3.5cm)	
	or BP2-2AS stacking	16in x 10in x 1.8in (40.6cm x 25.3cm x 4.6cm)	16.2in x 10.2in x 2.4in (41.1cm x 25.9cm x 6cm)	
	BP2-3A with	16.4in x 10.4in x 2.6in (41.5cm x 26.4cm x 6.6cm)	16.5in x 10.6in x 3.2in (41.9cm x 26.9cm x 8.2cm)	
	BP2-2AS stacking	16in x 10in x 1.8in (40.6cm x 25.3cm x 4.6cm)	16.2in x 10.2in x 2.4in (41.1cm x 25.9cm x 6cm)	
CD3-4* Full length	BP3-2A	20.3in x 10.4in x 1.8in (51.6cm x 26.4cm x 4.6cm)	20.5in x 10.6in x 2.4in (52.1cm x 26.9cm x 6.2cm)	
CD3-5* Full length	BP3-3A alone	20.3in x 10.4in x 2.6in (51.6cm x 26.4cm x 6.6cm)	20.5in x 10.6in x 3.2in (52.1cm x 26.9cm x 8.2cm)	
	or with BP3-1AS stacking	20in x 10in x 0.8in (50.8cm x 25.4cm x 2cm)	20.2in x 10.2in x 1.4in (51.3cm x 25.9cm x 3.5cm)	
	BP3-2A with	20.3in x 10.4in x 1.8in (51.6cm x 26.4cm x 4.6cm)	20.5in x 10.6in x 2.4in (52.1cm x 26.9cm x 6.2cm)	
	BP3-2AS stacking	20in x 10in x 1.8in (50.8cm x 25.4cm x 4.6cm)	20.2in x 10.2in x 2.4in (51.3cm x 25.9cm x 6cm)	
	or BP3-1AS stacking	20in x 10in x 0.8in (50.8cm x 25.4cm x 2cm)	20.2in x 10.2in x 1.4in (51.3cm x 25.9cm x 3.5cm)	
CD3-6* Full length	BP3-4A alone	20.3in x 10.4in x 3.6in (51.6cm x 26.4cm x 9.1cm)	20.5in x 10.6in x 4.2in (52.1cm x 26.9cm x 10.7cm)	
	or with BP3-1AS stacking	20in x 10in x 0.8in (50.8cm x 25.4cm x 2cm)	20.2in x 10.2in x 1.4in (51.3cm x 25.9cm x 3.5cm)	
	BP3-3A with	20.3in x 10.4in x 2.6in (51.6cm x 26.4cm x 6.6cm)	20.5in x 10.6in x 3.2in (52.1cm x 26.9cm x 8.2cm)	
	BP3-1AS stacking	20in x 10in x 0.8in (50.8cm x 25.4cm x 2cm)	20.2in x 10.2in x 1.4in (51.3cm x 25.9cm x 3.5cm)	
	or BP3-2AS stacking	20in x 10in x 1.8in (50.8cm x 25.4cm x 4.6cm)	20.2in x 10.2in x 2.4in (51.3cm x 25.9cm x 6cm)	
	BP3-2A with	20.3in x 10.4in x 1.8in (51.6cm x 26.4cm x 4.6cm)	20.5in x 10.6in x 2.4in (52.1cm x 26.9cm x 6.2cm)	
	BP3-2AS stacking	20in x 10in x 1.8in (50.8cm x 25.4cm x 4.6cm)	20.2in x 10.2in x 2.4in (51.3cm x 25.9cm x 6cm)	
	or BP3-1AS stacking	20in x 10in x 0.8in (50.8cm x 25.4cm x 2cm)	20.2in x 10.2in x 1.4in (51.3cm x 25.9cm x 3.5cm)	
CD3-7* Full length	BP3-5A	20.3in x 10.4in x 4.5in (51.6cm x 26.4cm x 11.4cm)	20.5in x 10.6in x 5.1in (52.1cm x 26.9cm x 12.8cm)	
	BP3-3A with	20.3in x 10.4in x 2.6in (51.6cm x 26.4cm x 6.6cm)	20.5in x 10.6in x 3.2in (52.1cm x 26.9cm x 8.2cm)	
	BP3-1AS stacking	20in x 10in x 0.8in (50.8cm x 25.4cm x 2cm)	20.2in x 10.2in x 1.4in (51.3cm x 25.9cm x 3.5cm)	
	or BP3-2AS stacking	20in x 10in x 1.8in (50.8cm x 25.4cm x 4.6cm)	20.2in x 10.2in x 2.4in (51.3cm x 25.9cm x 6cm)	
	BP3-2A with	20.3in x 10.4in x 1.8in (51.6cm x 26.4cm x 4.6cm)	20.5in x 10.6in x 2.4in (52.1cm x 26.9cm x 6.2cm)	
	BP3-2AS stacking	20in x 10in x 1.8in (50.8cm x 25.4cm x 4.6cm)	20.2in x 10.2in x 2.4in (51.3cm x 25.9cm x 6cm)	
	BP3-4A alone	20.3in x 10.4in x 3.6in (51.6cm x 26.4cm x 9.1cm)	20.5in x 10.6in x 4.2in (52.1cm x 26.9cm x 10.7cm)	
	or with BP3-1AS stacking	20in x 10in x 0.8in (50.8cm x 25.4cm x 2cm)	20.2in x 10.2in x 1.4in (51.3cm x 25.9cm x 3.5cm)	
	or BP3-2A stacking	20.3in x 10.4in x 1.8in (51.6cm x 26.4cm x 4.6cm)	20.5in x 10.6in x 2.4in (52.1cm x 26.9cm x 6.2cm)	
	Recommendations for laparoscopic instruments:			
		BP3-3A with Lap Chole Insert SCS3142010	20.3in x 10.4in x 2.6in (51.6cm x 26.4cm x 6.6cm)	20.5in x 10.6in x 3.2in (52.1cm x 26.9cm x 8.2cm)
		BP3-4A with Lap Chole Insert SCS3142010	20.3in x 10.4in x 3.6in (51.6cm x 26.4cm x 9.1cm)	20.5in x 10.6in x 4.2in (52.1cm x 26.9cm x 10.7cm)

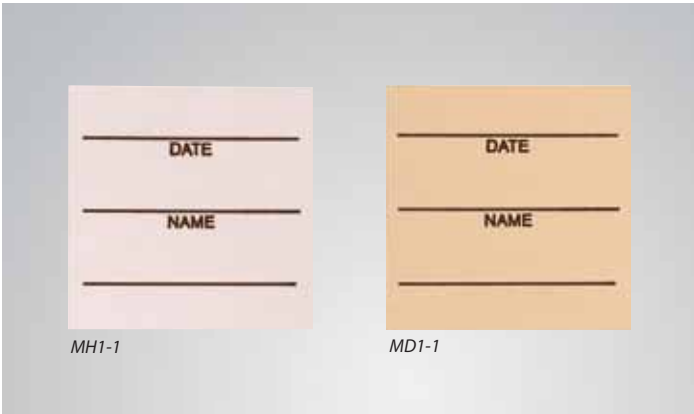
Genesis Sterilization Containers and Baskets

Basket Selection Guidelines (continued)

Container	Basket	Basket Inside Dim. L x W x H	Basket Outside Dim. L x W x H
CD3-8* DL Deep lid, Full length*	BP3-4A alone	20.3in x 10.4in x 3.6in (51.6cm x 26.4cm x 9.1cm)	20.5in x 10.6in x 4.2in (52.1cm x 26.9cm x 10.7cm)
	or with BP3-1AS stacking	20in x 10in x 0.8in (50.8cm x 25.4cm x 2cm)	20.2in x 10.2in x 1.4in (51.3cm x 25.9cm x 3.5cm)
	or BP3-2AS stacking	20in x 10in x 1.8in (50.8cm x 25.4cm x 4.6cm)	20.2in x 10.2in x 2.4in (51.3cm x 25.9cm x 6cm)
	BP3-3A with	20.3in x 10.4in x 2.6in (51.6cm x 26.4cm x 6.6cm)	20.5in x 10.6in x 3.2in (52.1cm x 26.9cm x 8.2cm)
	BP3-1AS stacking	20in x 10in x 0.8in (50.8cm x 25.4cm x 2cm)	20.2in x 10.2in x 1.4in (51.3cm x 25.9cm x 3.5cm)
	or BP3-2AS stacking	20in x 10in x 1.8in (50.8cm x 25.4cm x 4.6cm)	20.2in x 10.2in x 2.4in (51.3cm x 25.9cm x 6cm)
	BP3-2A with	20.3in x 10.4in x 1.8in (51.6cm x 26.4cm x 4.6cm)	20.5in x 10.6in x 2.4in (52.1cm x 26.9cm x 6.2cm)
BP3-2AS stacking	20in x 10in x 1.8in (50.8cm x 25.4cm x 4.6cm)	20.2in x 10.2in x 2.4in (51.3cm x 25.9cm x 6cm)	
CD3-9* DLNS Deep lid, Full length*	BP3-5A alone	20.3in x 10.4in x 4.5in (51.6cm x 26.4cm x 11.4cm)	20.5in x 10.6in x 5.1in (52.1cm x 26.9cm x 12.8cm)
	or with BP3-1AS stacking	20in x 10in x 0.8in (50.8cm x 25.4cm x 2cm)	20.2in x 10.2in x 1.4in (51.3cm x 25.9cm x 3.5cm)
	or BP3-2AS stacking	20in x 10in x 1.8in (50.8cm x 25.4cm x 4.6cm)	20.2in x 10.2in x 2.4in (51.3cm x 25.9cm x 6cm)
	BP3-4A alone	20.3in x 10.4in x 3.6in (51.6cm x 26.4cm x 9.1cm)	20.5in x 10.6in x 4.2in (52.1cm x 26.9cm x 10.7cm)
	or with BP3-1AS stacking	20in x 10in x 0.8in (50.8cm x 25.4cm x 2cm)	20.2in x 10.2in x 1.4in (51.3cm x 25.9cm x 3.5cm)
	or BP3-2AS	20in x 10in x 1.8in (50.8cm x 25.4cm x 4.6cm)	20.2in x 10.2in x 2.4in (51.3cm x 25.9cm x 6cm)
	BP3-3A with	20.3in x 10.4in x 2.6in (51.6cm x 26.4cm x 6.6cm)	20.5in x 10.6in x 3.2in (52.1cm x 26.9cm x 8.2cm)
	BP3-1AS stacking	20in x 10in x 0.8in (50.8cm x 25.4cm x 2cm)	20.2in x 10.2in x 1.4in (51.3cm x 25.9cm x 3.5cm)
	or BP3-2AS stacking	20in x 10in x 1.8in (50.8cm x 25.4cm x 4.6cm)	20.2in x 10.2in x 2.4in (51.3cm x 25.9cm x 6cm)
	Recommendation for laparoscopic instruments:		
BP3-3A with Lap Chole Insert SCS3142010 resting on handles	20.3in x 10.4in x 2.6in (51.6cm x 26.4cm x 6.6cm)	20.5in x 10.6in x 3.2in (52.1cm x 26.9cm x 8.2cm)	
CD4-3* Narrow short shallow	BP4-2A	18in x 5.5in x 1.7in (45.7cm x 14cm x 4.3cm)	18.3in x 5.8in x 2.3in (46.4cm x 14.6cm x 5.9cm)
CD4-5* Narrow short	BP4-4A	18in x 5.5in x 3.4in (45.7cm x 14cm x 8.6cm)	18.3in x 5.8in x 4in (46.4cm x 14.6cm x 10.2cm)
	BP4-2A	18in x 5.5in x 1.7in (45.7cm x 14cm x 4.3cm)	18.3in x 5.8in x 2.3in (46.4cm x 14.6cm x 5.9cm)
	BP4-2AS stacking	25.2in x 7.6in x 1.8in (64cm x 19.3cm x 4.6cm)	25.4in x 7.8in x 2.4in (64.5cm x 19.7cm x 6cm)
CD5-3* Narrow long shallow	BP5-2A	25.5in x 7.9in x 2.1in (64.8cm x 20.1cm x 5.3cm)	25.7in x 8.1in x 2.7in (65.2cm x 20.6cm x 6.9cm)
CD5-61* Narrow long	BP5-4A	25.5in x 7.9in x 3.6in (64.8cm x 20.1cm x 9.1cm)	25.7in x 8.1in x 4.2in (65.2cm x 20.6cm x 10.7cm)
	BP5-2A with	25.5in x 7.9in x 2.1in (64.8cm x 20.1cm x 5.3cm)	25.7in x 8.1in x 2.7in (65.2cm x 20.6cm x 6.9cm)
	BP5-2AS stacking	25.2in x 7.6in x 1.8in (64cm x 19.3cm x 4.6cm)	25.4in x 7.8in x 2.4in (64.5cm x 19.7cm x 6cm)
	Recommendation for long instruments (45cm):		
	BP5-3V for use only with Rack R-ALG00003 or R-ALG00004	18.2in x 8.1in x 2.7in (46.3cm x 20.6cm x 6.7cm)	18.3in x 8.2in x 3.3in (46.4cm x 20.7cm x 8.3cm)
CD6-6*NS Retractor	BP6-4A	22.8in x 14.9in x 3.6in (57.9cm x 37.8cm x 9.1cm)	23in x 15.1in x 4.2in (58.4cm x 38.4cm x 10.7cm)
CD7-5*NS Extra long	BP7-3A alone	22.3in x 10.4in x 2.6in (56.6cm x 26.4cm x 6.6cm)	22.5in x 10.6in x 3.2in (57.2cm x 26.9cm x 8.1cm)
CD7-6*NS Extra long	BP7-4A alone	22.3in x 10.4in x 3.6in (56.6cm x 26.4cm x 9.1cm)	22.5in x 10.6in x 4.2in (57.2cm x 26.9cm x 10.7cm)
	BP7-3A alone	22.3in x 10.4in x 2.6in (56.6cm x 26.4cm x 6.6cm)	22.5in x 10.6in x 3.2in (57.2cm x 26.9cm x 8.1cm)
	or with BP7-2AS stacking	22.1in x 10in x 1.8in (56.1cm x 25.4cm x 4.6cm)	22.3in x 10.2in x 2.4in (56.5cm x 25.9cm x 6.1cm)
CD7-9*NS Extra long	BP7-4A alone	22.3in x 10.4in x 3.6in (56.6cm x 26.4cm x 9.1cm)	22.5in x 10.6in x 4.2in (57.2cm x 26.9cm x 10.7cm)
	or BP7-2AS stacking	22.1in x 10in x 1.8in (56.1cm x 25.4cm x 4.6cm)	22.3in x 10.2in x 2.4in (56.5cm x 25.9cm x 6.1cm)
	or BP7-4AS stacking	22.1in x 10in x 3.4in (56.1cm x 25.4cm x 8.6cm)	22.3in x 10.2in x 4in (56.5cm x 25.9cm x 10.2cm)
	BP7-3A alone	22.3in x 10.4in x 2.6in (56.6cm x 26.4cm x 6.6cm)	22.5in x 10.6in x 3.2in (57.2cm x 26.9cm x 8.1cm)
	or with BP7-4AS	22.1in x 10in x 3.4in (56.1cm x 25.4cm x 8.6cm)	22.3in x 10.2in x 4in (56.5cm x 25.9cm x 10.2cm)

*Order numbers should add a B suffix for perforated bottom containers, a C suffix for solid bottom containers or a ST suffix for STERRAD system compatible containers (not available on deep lid and extra-long containers).

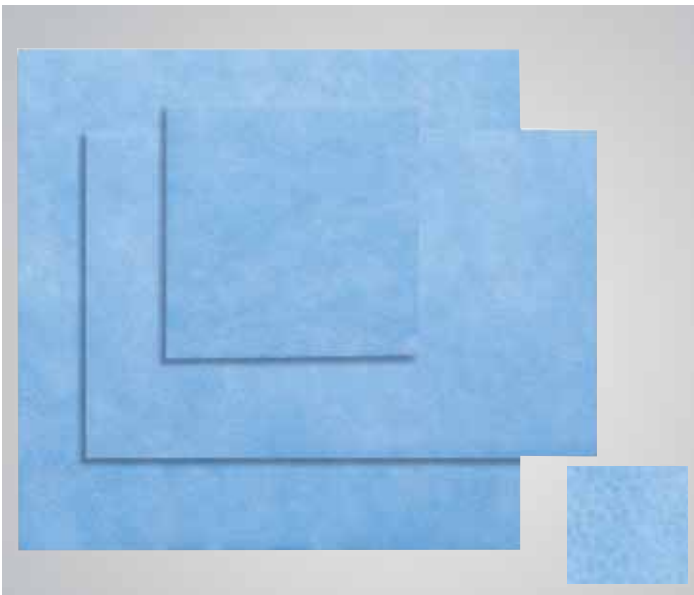
^{NS}Not available in STERRAD system compatible version (deep lid and extra-long containers).



Genesis Data Cards

500 per box.

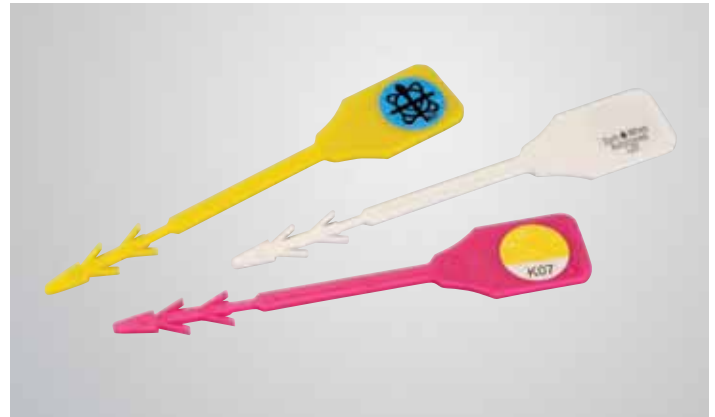
Cat. No.	Description
MD1-1	Paper data card. For use in steam or EO sterilization.
MH1-1	Non-cellulose. For use in STERRAD sterilization systems.



Genesis Filter Paper

For use in steam, EO sterilization, and STERRAD systems.

Cat. No.	Size	Qty/Box
DST-1	4-1/2in x 4-1/2in (11.4cm x 11.4cm)	500
DST-2	9in x 6in (23cm x 15.2cm)	500
DST-3	9.5in x 9.5in (24cm x 24.1cm)	1000



Tamper-Evident Arrows

Double-barbed.

Cat. No.	Description	Qty/Box
AG2-1	Gas (EO). Yellow.	150
AG2-2	Gas (EO). Yellow.	500
AS2-2	Steam. White.	500
AS2-3	Steam. White.	1,000
AH2-1	STERRAD container compatible. Fuchsia.	150



"S" Clip

Cat. No.	Description
R1788	"S" Clip, external card holder.

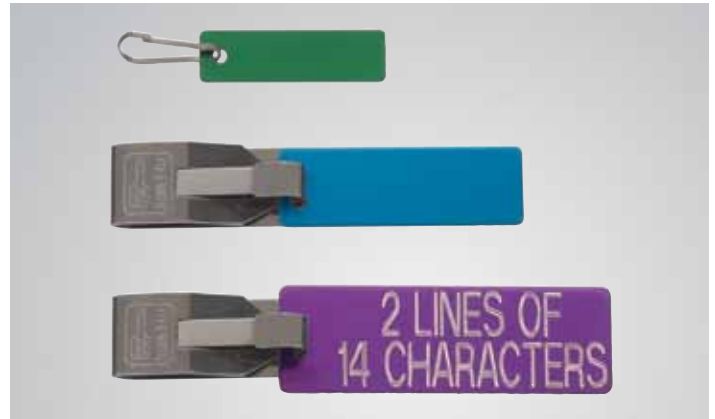
Genesis Sterilization Container Accessories



Genesis Container ID Tags

14 characters per line, 2 lines per tag, up to 4 tags per container (2 tags on each end).

Cat. No.	Color
TC2-1	Black
TC2-2	Blue
TC2-3	Brown
TC2-4	Gold
TC2-5	Green
TC2-6	Red
TC2-7	Silver
TC2-8	Orange
TC2-9	Purple
TC2-10	Midnight blue
TC2-12	Fuchsia



Genesis Basket ID Tags

Available in three sizes: standard, large and extra-large.

Each tag can hold 14 characters per line, 2 lines per tag.

Standard – .5in x 1.75in (1.3cm x 4.4cm). Large – .75in x 2.25in (1.9cm x 5.7cm). Extra-large – 1in x 3in (2.54cm x 7.6cm).

Cat. No.	Description	Color
TB1-1	Standard	Black
TB1-2	Standard	Blue
TB1-3	Standard	Brown
TB1-4	Standard	Gold
TB1-5	Standard	Green
TB1-6	Standard	Red
TB1-7	Standard	Silver
TB1-8	Standard	Orange
TB1-9	Standard	Purple
TB1-10	Standard	Midnight blue
TB1-12	Standard	Fuchsia
TB2-1	Large	Black
TB2-2	Large	Blue
TB2-3	Large	Brown
TB2-4	Large	Gold
TB2-5	Large	Green
TB2-6	Large	Red
TB2-7	Large	Silver
TB2-8	Large	Orange
TB2-9	Large	Purple
TB2-10	Large	Midnight blue
TB2-12	Large	Fuchsia
TB3-1	Extra-large	Black
TB3-2	Extra-large	Blue
TB3-3	Extra-large	Brown
TB3-4	Extra-large	Gold
TB3-5	Extra-large	Green
TB3-6	Extra-large	Red
TB3-7	Extra-large	Silver
TB3-8	Extra-large	Orange
TB3-9	Extra-large	Purple
TB3-10	Extra-large	Midnight blue
TB3-12	Extra-large	Fuchsia

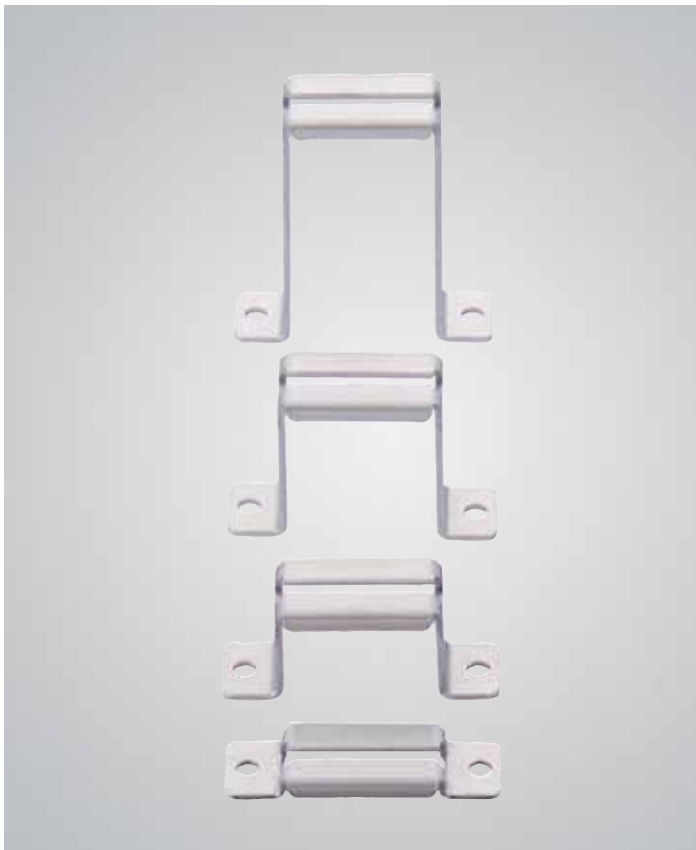
Aluminum Brackets

Aluminum brackets are available in three lengths and four heights for installation inside Genesis baskets. We also offer aluminum brackets in three lengths that mount onto the sides of Genesis baskets.

An assortment of silicone bars provides countless configurations for your instruments.



Aluminum bracket with silicone bar



1.5in (3.8cm) Long Aluminum Brackets

For use with 1.5in (3.8cm) long silicone bars. Available in pairs.

Cat. No.	Height
GR1892-1	0.17in (0.4cm)
GR1892-4	1.0in (2.5cm)
GR1892-7	1.6in (4.1cm)
GR1892-10	2.6in (6.6cm)



3.0in (7.6cm) Long Aluminum Brackets

For use with 3.0in (7.6cm) long silicone bars. Available in pairs.

Cat. No.	Height
GR1892-2	0.17in (0.4cm)
GR1892-5	1.0in (2.5cm)
GR1892-8	1.6in (4.1cm)
GR1892-11	2.6in (6.6cm)

Genesis Sterilization Container Accessories

7.0in (17.8cm) Long Aluminum Brackets

For use with 7in (17.8cm) long silicone bars.
Available in pairs.

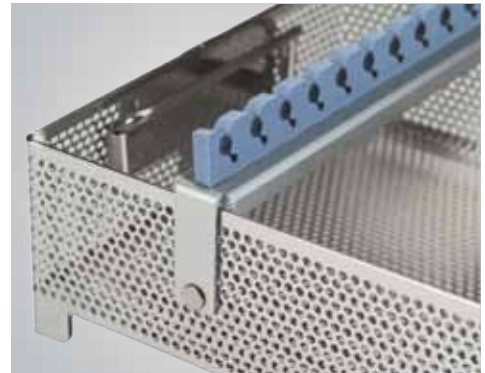
Cat. No.	Height
GR1892-3	0.17in (0.4cm)
GR1892-6	1.0in (2.5cm)
GR1892-9	1.6in (4.1cm)
GR1892-12	2.6in (6.6cm)



2.0in (5.1cm) High Side-Mount Aluminum Brackets

Available in pairs.

Cat. No.	Length
GR1893-2	8.0in (20.3cm)
GR1893-1	10.5in (26.7cm)
GR1893-3	15.0in (38.1cm)



Side-mounting aluminum bracket with silicone bar



Silicone Bars

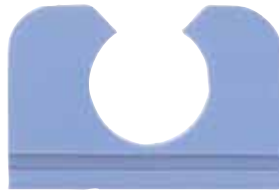
Silicone bars slide easily into aluminum brackets. The bars come in a variety of lengths and cut-out configurations designed to suit your surgical instruments, so there is always a perfect fit.

1.5in (3.8cm) Long Silicone Bars

For use with 1.5in (3.8cm) long aluminum brackets. Available one each. **Shown actual size.**



Cat. No.	Description
GR5353	Open end 12mm opening size



Cat. No.	Description
GR5350	Open end 15mm opening size



Cat. No.	Description
GR5355	Closed end 4mm opening size



Cat. No.	Description
GR5354	Closed end 6mm opening size



Cat. No.	Description
GR5351	Closed end 8mm opening size



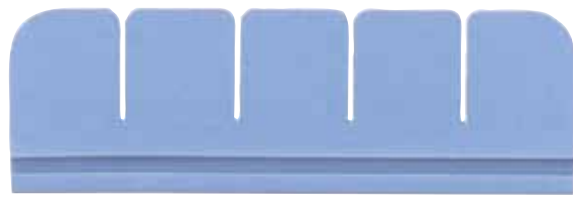
Cat. No.	Description
GR5352	Closed end 12mm opening size

3.0in (7.6cm) Long Silicone Bars

For use with 3.0in (7.6cm) long aluminum brackets. Available one each. **Shown actual size.**



Cat. No.	Description
GR5311	Solid



Cat. No.	Description
GR5312	4 slot

Genesis Sterilization Container Accessories

3.0in (7.6cm) Long Silicone Bars (continued)

Shown actual size.



Cat. No.	Description
GR5330	Star pattern, 3 holes 3mm to 8mm opening size



Cat. No.	Description
GR5331	Star pattern, 3 holes 8mm to 15mm opening size



Cat. No.	Description
GR5332	Dual size, 3 holes 5mm and 10mm opening size



Cat. No.	Description
GR5320	3 slot 5mm opening size



Cat. No.	Description
GR5335	5 slot 3mm opening size



Cat. No.	Description
GR5333	5 slot 5mm opening size



Cat. No.	Description
GR5334	3 slot 10mm opening size



Cat. No.	Description
GR5339	Camera holder 30mm opening size



Cat. No.	Description
GR5340	Scope holder, double end 8mm and 15mm opening size



Cat. No.	Description
GR5341	Scope holder, double end 12mm opening size

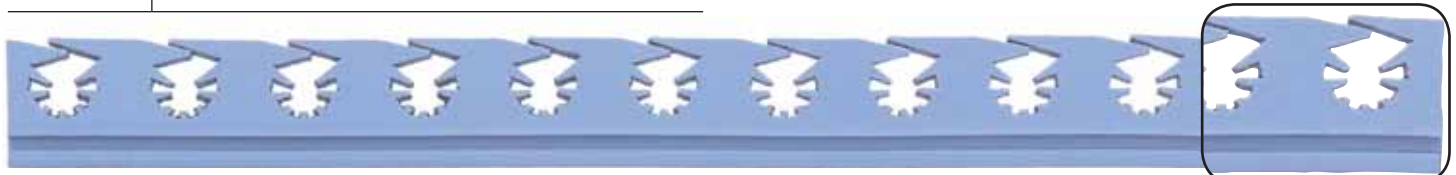
7.0in (17.8cm) Long Silicone Bars

For use with 7.0in (17.8cm) long aluminum brackets. Available one each.



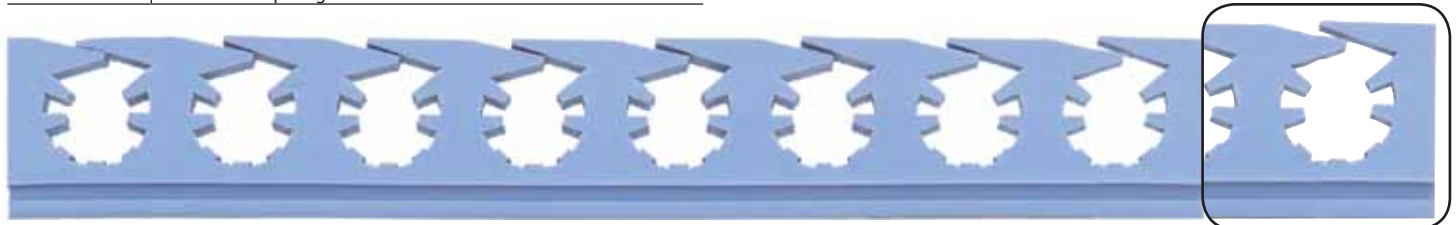
Cat. No.	Description
GR5310	Solid

Shown actual size



Cat. No.	Description
GR5370	Star pattern, 10 holes 3mm to 8mm opening size

Shown actual size



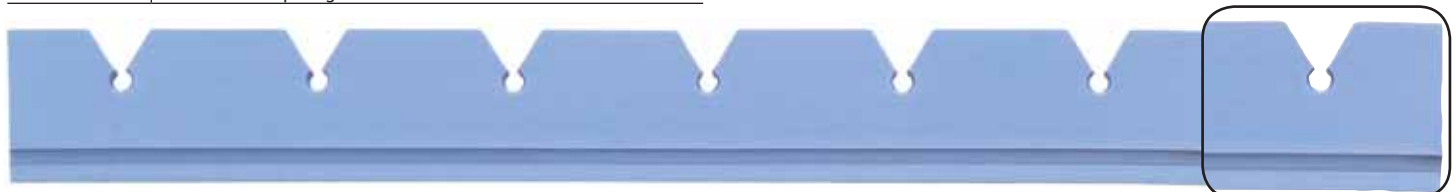
Cat. No.	Description
GR5371	Star pattern, 8 holes 8mm to 15mm opening size

Shown actual size



Cat. No.	Description
GR5372	Dual size, 9 holes 5mm to 10mm opening size

Shown actual size



Cat. No.	Description
GR5300	6 slot 3mm opening size

Shown actual size

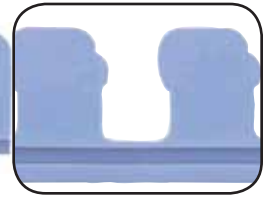


Cat. No.	Description
GR5301	6 slot 6mm opening size

Shown actual size

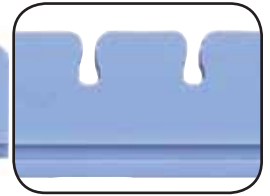
Genesis Sterilization Container Accessories

7.0in (17.8cm) Long Silicone Bars (continued)



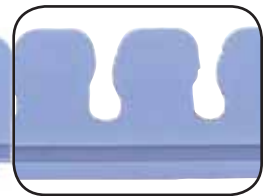
Shown actual size

Cat. No.	Description
GR5374	8 slot 10mm opening size



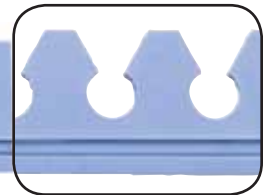
Shown actual size

Cat. No.	Description
GR5375	12 slot 3mm opening size



Shown actual size

Cat. No.	Description
GR5373	12 slot 5mm opening size



Shown actual size

Cat. No.	Description
GR5302	12 slot 6mm opening size

10.5in (26.7cm) Long Silicone Bars

For use with 10.5in (26.7cm) long Aluminum Bracket (GR1893-1). Available in pairs.



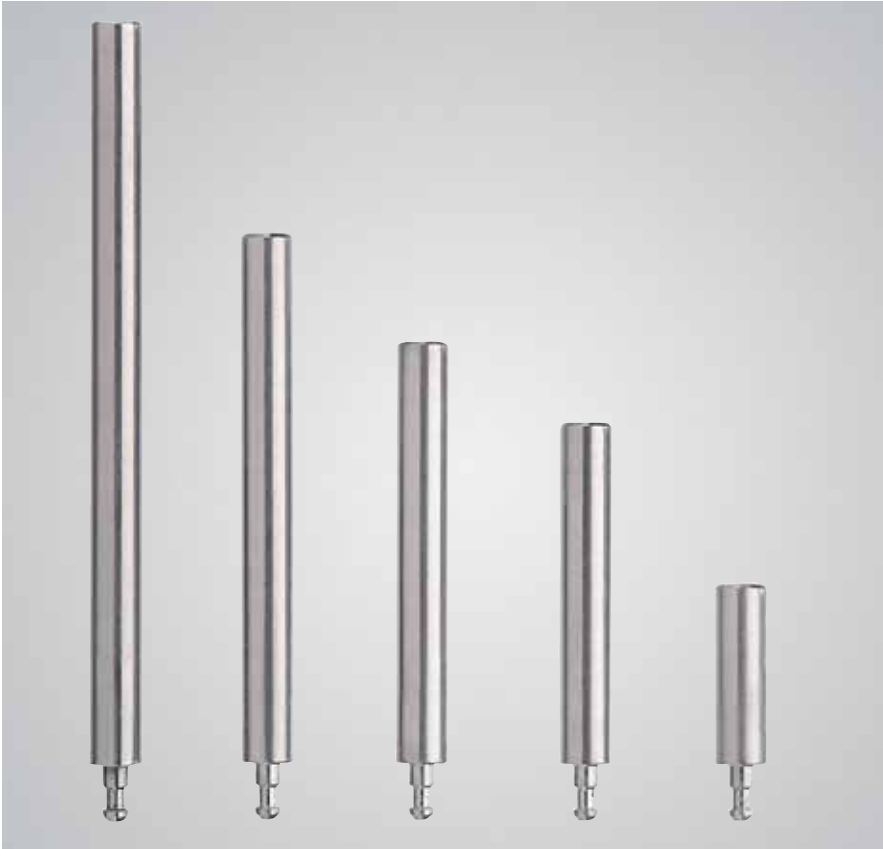
Shown actual size

Cat. No.	Description
GR33322338	Dual size, 16 holes 5mm and 10mm opening size



Shown actual size

Cat. No.	Description
GR33322561	Dual size, 14 holes 5mm and 10mm opening size



Pins are available in lengths from 1.0in (2.5cm) to 3.5in (8.9cm)

Quick-Disconnect Posts, Pins and Clip

Five pin sizes for holding ring-handled instruments can be easily secured in place using the quick-disconnect clip (see Installation Instructions on page 20). The quick-disconnect clip can easily be removed for reconfiguration within the container. **12 posts, pins or clips per bag.**

Cat. No.	Description	Size
GR1808-8	Pin	1.0in (2.5cm)
GR1808-4	Pin	1.6in (4.1cm)
GR1808-5	Pin	2.0in (5.1cm)
GR1808-6	Pin	2.5in (6.4cm)
GR1808-7	Pin	3.5in (8.9cm)
GR1808-1	Post	Low profile
GR1808-3	Post	High profile
GR1807	Clip	



Posts GR1808-1 for installing aluminium brackets and dividers in perforated baskets

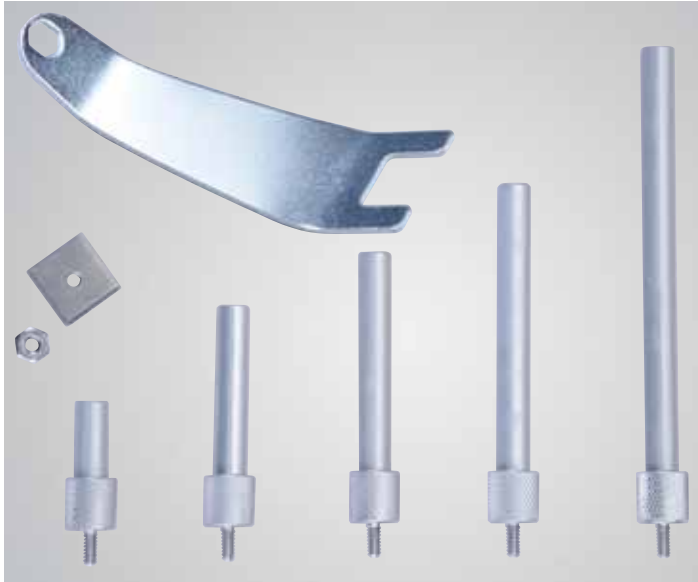


Posts GR1808-3 for installing aluminum brackets and dividers in perforated baskets



Quick-Disconnect Clips GR1807

Genesis Sterilization Container Accessories



Instrument Pins

For Genesis baskets.

Cat. No.	Height
PP1-1	1in (2.5cm)
PP1-2	1.5in (3.8cm)
PP1-2.5	2in (5.1cm)
PP1-3	2.5in (6.3cm)
PP1-4	3.5in (8.9cm)
WP1-1	Hex-nut wrench

Installation Instructions

All Genesis accessories are designed to protect your valuable instruments while allowing for effective sterilization. To use Genesis accessories with your existing Genesis container system, simply follow these steps.



1. Select the desired posts or pins, aluminum brackets and silicone bars needed to properly accommodate the instruments being sterilized.



2. Insert a post through the hole on either end of the bracket and position in the Genesis basket at the desired location.



3. Holding the post in place, turn the basket over and position the quick-disconnect clip over the tip of the post. Slide the clip until the post is locked securely in place. (Repeat steps 2 and 3 on the other end of the bracket.)

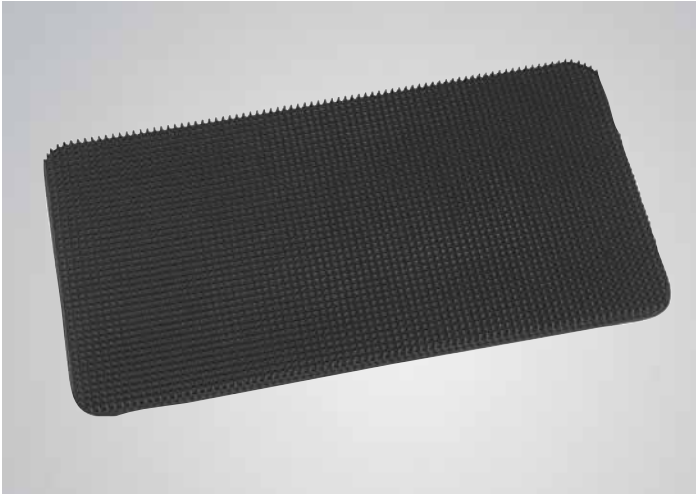


4. Slide a silicone bar into the bracket.*



5. To release, apply pressure while sliding the quick-disconnect clip away from the post.

*Instrument lubricant may be used to lubricate the aluminum bracket for easy installation of the silicone bar.



Mats

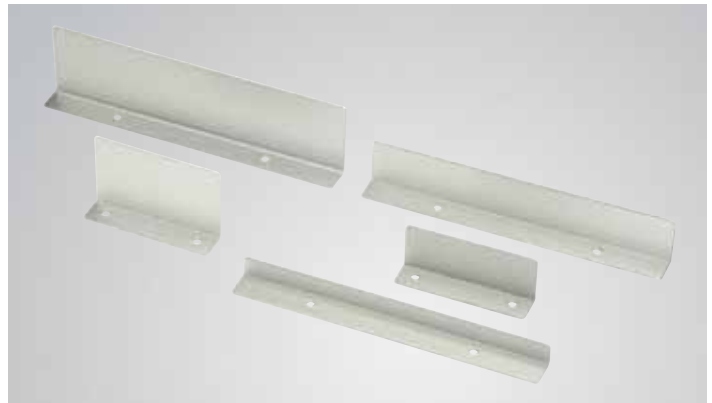
Soft, spiked, perforated, rounded corners.

Cat. No.	Size
SX2972-1	6-3/4in x 10-3/4in (17.2cm x 27.3cm) Quarter-length basket size
SX2972-3	9in x 10in (22.9cm x 25.4cm) Half-length basket size
SX2972-4	10in x 16in (25.4cm x 40.6cm) Mid-length basket size
SX2972-5	10in x 20in (25.4cm x 50.8cm) Full-length basket size
SX2972-6	15in x 23in (38.1cm x 58.4cm) Retractor-length basket size



Instrument Holders

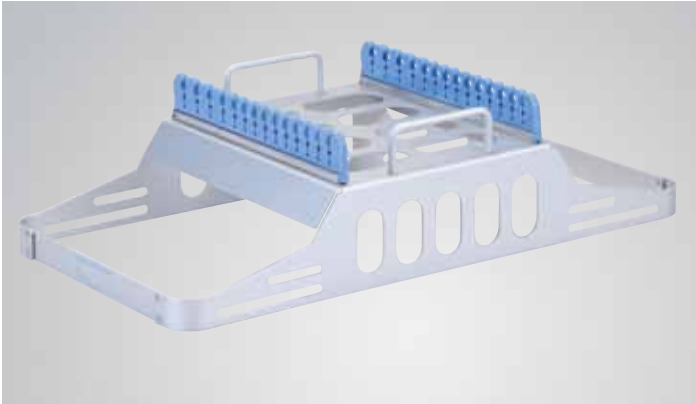
Cat. No.	Size
BP66-2605	5in x 1.5in (12.7cm x 3.8cm)
BP66-2610	10in x 1.5in (25.4cm x 3.8cm)



Dividers

Cat. No.	Size
DP1-4	4.25in x 1.5in (10.8cm x 3.8cm)
DP1-2	4.25in x 2.5in (10.8cm x 6.3cm)
DP1-5	10in x .75in (25.4cm x 1.9cm)
DP1-3	10in x 1.5in (25.4cm x 3.8cm)
DP1-1	10in x 2.5in (25.4cm x 6.3cm)

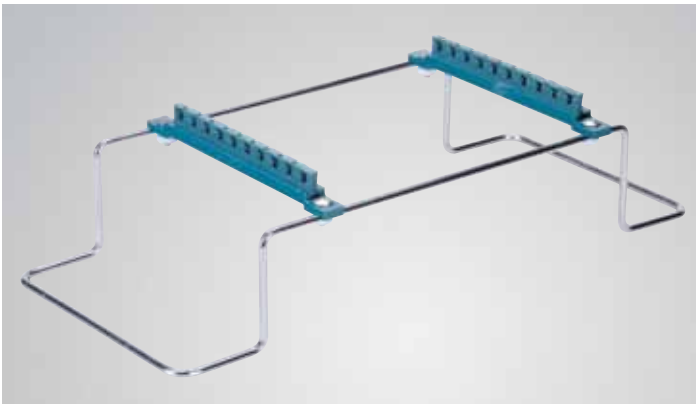
Genesis Sterilization Container Accessories



Laparoscopic Tray Insert

For use in Genesis Full-Length Standard Containers CD3-7B and CD3-7C. Includes 2.5mm to 10mm silicone holders. Height 4.75in (119mm).

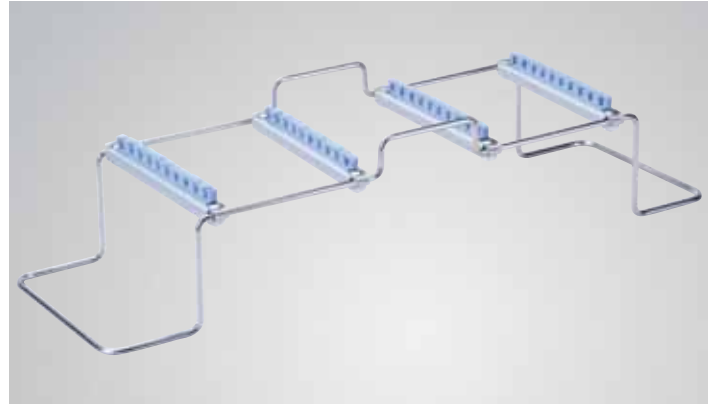
Cat. No.	Description
SCS3142010	Holds 14 instruments.



Laparoscopic Racks

For use in Genesis Full-Length Standard Containers CD3-6B, CD3-6C, CD3-7B and CD3-7C.

Cat. No.	Description
R-ALG00001	With 3mm and 8mm silicone holders. Holds 10 instruments.
R-ALG00002	With 5mm and 10mm silicone holders. Holds 9 instruments.



Genesis Large Narrow Container CD5-61, Laparoscopic Rack R-ALG00003 and Basket BP5-3V

Laparoscopic Racks and Basket

For use in Genesis Large Narrow Containers CD5-61B and CD5-61C.

Cat. No.	Description
R-ALG00003	With 3mm and 8mm silicone holders. Holds 10 instruments.
R-ALG00004	With 5mm and 10mm silicone holders. Holds 10 instruments.
BP5-3V	Basket for laparoscopic rack

Genesis Sterilization Container System – Transport and Storage



Container Storage Carts

Easy accessibility from both sides. Lockable wheels.

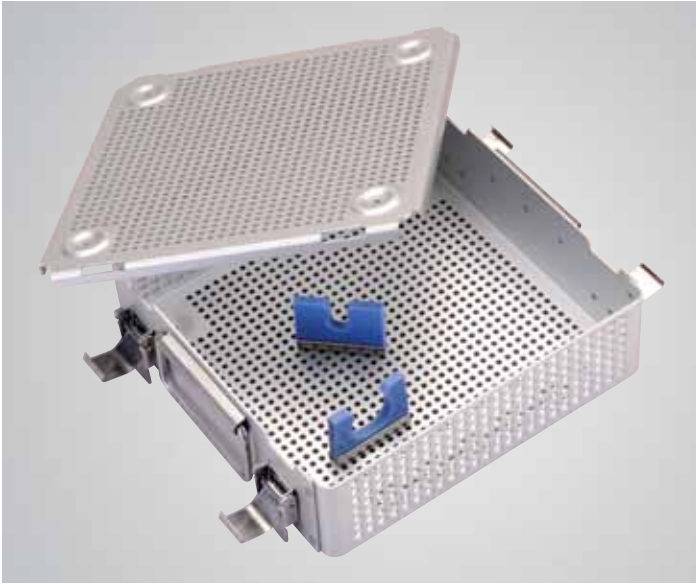
Cat. No.	Description	Dimensions L x W x H
SC2-1	2-bay, low-profile. Has top shelf. Includes 8 pairs of adjustable brackets.	44in x 30in x 24in (111.8cm x 76.2cm x 61cm)
SC1-1	2-bay, high-profile. No top shelf. Includes 16 pairs of adjustable brackets.	68in x 30in x 24in (172.7cm x 76.2cm x 61cm)
SC2-2	3-bay, low-profile. Has top shelf. Includes 12 pairs of adjustable brackets.	44in x 48in x 24in (111.8cm x 121.9cm x 61cm)

Coated Cart Covers

Water-resistant vinyl nylon. With hook and loop closure.

Cat. No.	Description	Dimensions
SCC-21	For SC2-1	39in x 30in x 24in (99cm x 76cm x 61cm)
SCC-31	For SC2-2	39in x 48in x 24in (99cm x 122cm x 61cm)
SCC-11	For SC1-1	62in x 30in x 24in (157cm x 76cm x 61cm)

Sterilization Cases, Trays and Accessories



Universal Camera Case

Designed for individual storage of camera and light cords. Can be modified with pin mat or silicone brackets.

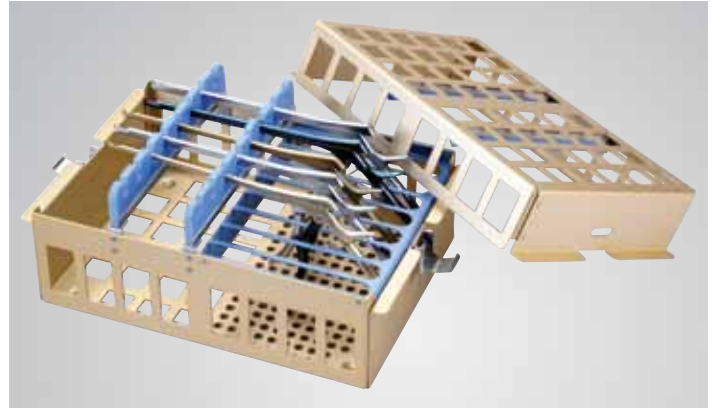
Cat. No.	Dimensions
SCS30109	9in x 10in x 3in (22.9cm x 25.4cm x 4.5cm)



Operative Scope Case

For storage and sterilization of scopes. Adaptable for 1.7mm to 10mm scopes.

Cat. No.	Dimensions
SCS30418	4in x 17.5in x 1.5in (10.2cm x 44.5cm x 3.8cm)



KERRISON Rongeur Trays

Nylon-coated handle compartment. Drop slot keyhole silicone insert to protect rongeur tips. Adjustments for silicone insert to accommodate shorter tip rongeurs. Holds eight instruments.

Cat. No.	Dimensions
SCS30812	9in x 13in x 6in (22.9cm x 33cm x 15.2cm)



Microsurgery Trays

General use. Lid retainers securely hold instruments in place. Gold anodized surface and embossed feet. Removable instrument tray is 3in (7.6cm) deep.

Cat. No.	Description
SCS31010	Without accessory area. Single level tray. 10-1/2in x 10-1/2in (26.6cm x 26.6cm)
SCS31015-0	Medium tray. Single level tray. 10-1/2in x 15in (26.6cm x 38.1cm)
SCS31015-L	With long tray and accessory area 10-1/2in x 15in (26.6cm x 38.1cm)
SCS31015-S	With short tray and accessory area 10-1/2in x 15in (26.6cm x 38.1cm)
SCS31020-L	With long tray and accessory area 10-1/2in x 20in (26.6cm x 50.8cm)
SCS31020-S	With short tray and accessory area 10-1/2in x 20in (26.6cm x 50.8cm)

Sterilization Cases, Trays and Accessories



Lap Chole Instrument Cases

Laparoscopic insert with case.

Cat. No.	Dimensions
SCS51523	11in x 23in x 8in (27.9cm x 58.4cm x 20.3cm)



Metal Scope Case

With detachable lid.

Cat. No.	Dimensions
SCS30011	5in x 10.5in x 2in (7.6cm x 26.7cm x 5.1cm)

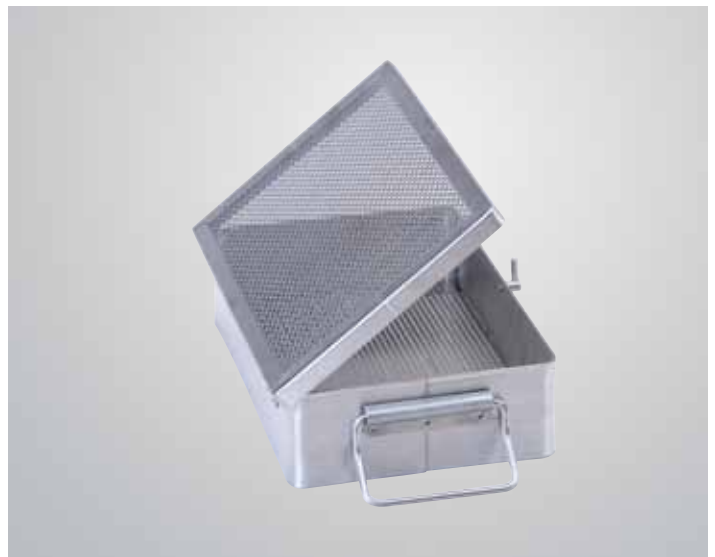
Cleaning and sterilizing trays are made of sturdy stainless steel in a full range of useful sizes – which fit standard autoclaves and ultrasonic cleaners for maximum convenience. Available in both open and lidded types.



Sterilization Trays

Unlidded trays for wrapped instruments.

Cat. No.	Dimensions
SU2987-002	6-1/2in x 10in x 2-1/2in (16.5cm x 25.4cm x 6.3cm)
SU2987-004	10in x 10-1/2in x 3-1/2in (25.4cm x 26.7cm x 8.9cm)
SU2987-001	10-1/2in x 15in x 3-1/2in (26.7cm x 38.1cm x 8.9cm)
SU2987	10-1/2in x 20in x 3-1/2in (26.7cm x 50.8cm x 8.9cm)
SU2987-003	13in x 20-1/4in x 3-1/2in (33cm x 51.4cm x 8.9cm)



Sterilization Tray

With lid, for wrapped instruments.

Cat. No.	Dimensions
SU2981	6-1/2in x 10in x 2-1/2in (16.5cm x 25.4cm x 6.3cm)

Sterilization Cases, Trays and Accessories



High-Side Perforated MAYO Trays

Perforated bottom pans.

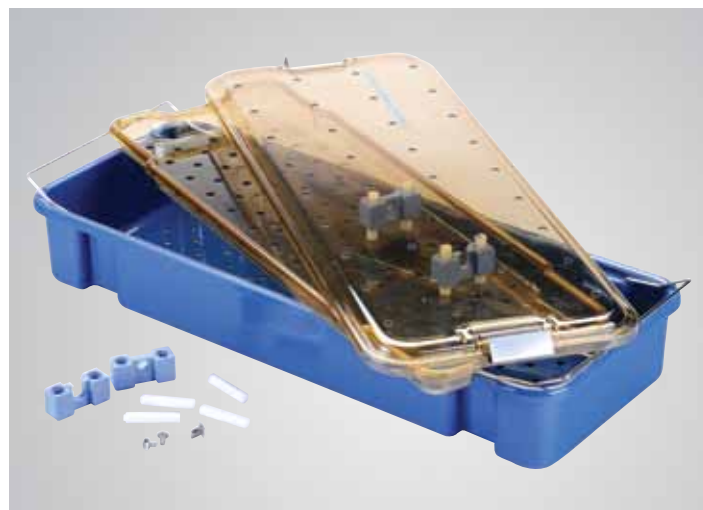
Cat. No.	Dimensions
SU2989-001	5in x 9in x 2in (12.7cm x 22.9cm x 5cm)
SU2989-002	6-1/2in x 10in x 2in (16.5cm x 25.4cm x 5cm)
SU2989-003	7-3/4in x 12-1/4in x 2-1/2in (19.7cm x 31.1cm x 6.3cm)
SU2989-004	10-1/2in x 12-3/4in x 2-1/2in (26.7cm x 32.4cm x 6.3cm)
SU2989-005	10in x 16in x 2-1/2in (25.4cm x 40.6cm x 6.3cm)
SU2989-006	12-3/4in x 20-3/4in x 2in (32.4cm x 52.7cm x 5cm)



Perforated MAYO Trays

Perforated bottom pans.

Cat. No.	Dimensions
SU2989-011	6-1/2in x 10in x 3/4in (16.5cm x 25.4cm x 1.9cm)
SU2989-012	9-3/4in x 13-1/2in x 3/4in (24.7cm x 34.3in x 1.9cm)
SU2989-013	10-5/8in x 15in x 3/4in (26.9cm x 38.1cm x 1.9cm)
SU2989-014	11-5/8in x 17in x 3/4in (29.5cm x 43.2cm x 1.9cm)
SU2989-015	12-5/8in x 19in x 3/4in (32cm x 48.3cm x 1.9cm)
SU2989-016	16-1/4in x 21-1/4in x 7/8in (41.2cm x 53.9cm x 2.2cm)

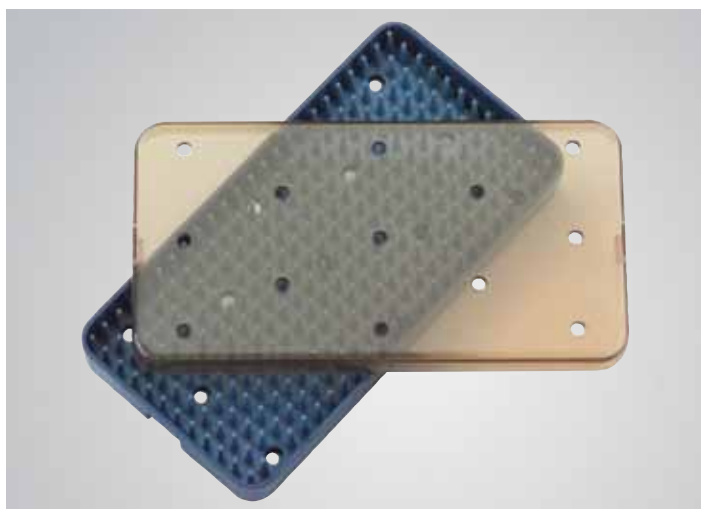


Plastic Micro Trays

Cat. No.	Description	Dimensions
SU2990-080	With mat	15in x 10in x 3/4in (38.1cm x 25.4cm x 1.9cm)
SU2990-090	Base and lid	15in x 10in x 1-1/2in (38.1cm x 25.4cm x 3.8cm)
SU2990-091	Double with mat	15in x 10in x 1-1/2in (38.1cm x 25.4cm x 3.8cm)
SU2990-092	Double with 2 mats	15in x 10in x 1-1/2in (38.1cm x 25.4cm x 3.8cm)

Plastic Endoscopic Trays

Cat. No.	Description	Dimensions
SU2995-010	With pin	18in x 8-1/4in x 1-3/4in (45.7cm x 21cm x 4.4cm)
SU2995-020	With pin	22in x 8-1/4in x 1-3/4in (55.9cm x 21cm x 4.4cm)
SU2995-030	With 2 pin sets	22in x 8-1/4in x 3-1/2in (55.9cm x 21cm x 8.9cm)



Plastic Microsurgical Sterilization Trays

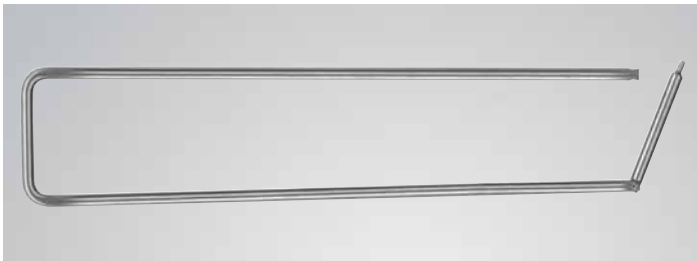
Cat. No.	Description	Dimensions
SU2990-010	With mat	6in x 2in x 5/8in (15.2cm x 5cm x 1cm)
SU2990-030	With mat	6in x 3in x 5/8in (15.2cm x 7.6cm x 1cm)
SU2990-050	With mat	9-5/8in x 6in x 5/8in (24.5cm x 15.2cm x 1cm)
SU2990-054	Base and lid	10in x 6in x 1-1/2in (25.4cm x 15.2cm x 3.8cm)
SU2990-060	Double-deck with mats	9-5/8in x 6in x 1-1/2in (24.5cm x 15.2cm x 3.8cm)

Stringers and Mitts



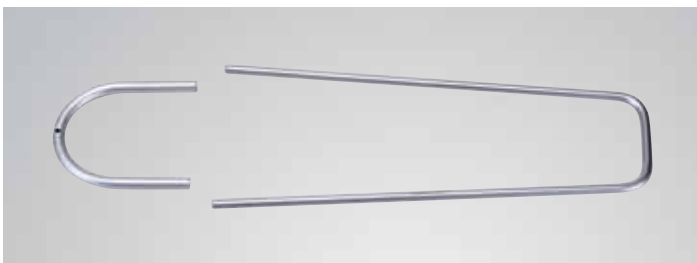
Safety Mitts

Cat. No.	Description
SU2971	Pair



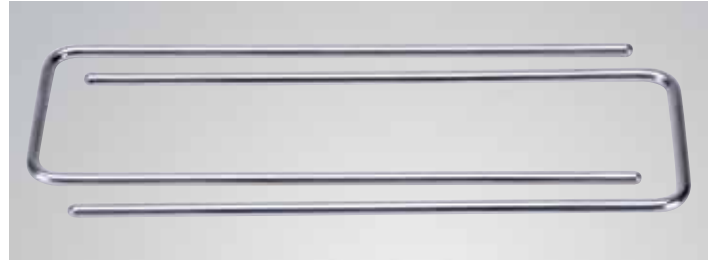
Single Link Instrument Holders

Cat. No.	Size
SU51-0006	6in x 2-1/2in (15.2cm x 6.3cm)
SU51-0008	8in x 2-1/2in (20.3cm x 6.3cm)
SU51-0010	10in x 2-1/2in (25.4cm x 6.3cm)
SU51-0012	12in x 2-1/2in (30.5cm x 6.3cm)
SU51-0014	14in x 2-1/2in (35.6cm x 6.3cm)
SU51-0016	16in x 2-1/2in (40.6cm x 6.3cm)



WEINSTEIN Instrument Sterilizing Racks

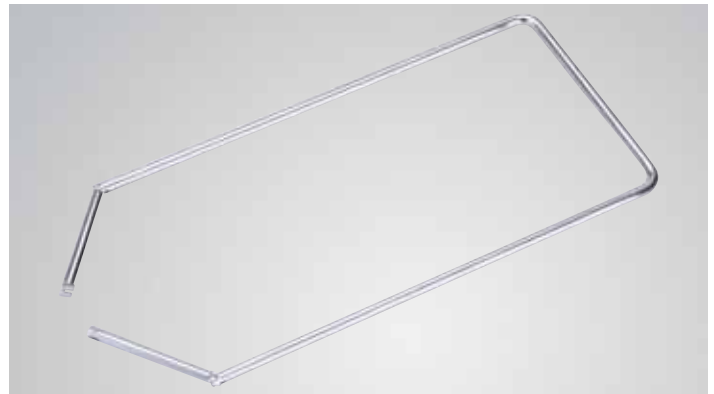
Cat. No.	Description	Size
SU2977	Holds up to 36 forceps	12in x 3in (30.5cm x 7.6cm)



Instrument Stringers

Pair.

Cat. No.	Size
SU2986-008	8in x 2-1/2in (20.3cm x 6.3cm)
SU2986-010	10in x 2-1/2in (25.4cm x 6.3cm)
SU2986-012	12in x 2-1/2in (30.5cm x 6.3cm)
SU2986-014	14in x 2-1/2in (35.6cm x 6.3cm)
SU2986-016	16in x 2-1/2in (40.6cm x 6.3cm)
SU2986-018	18in x 2-1/2in (45.7cm x 6.3cm)



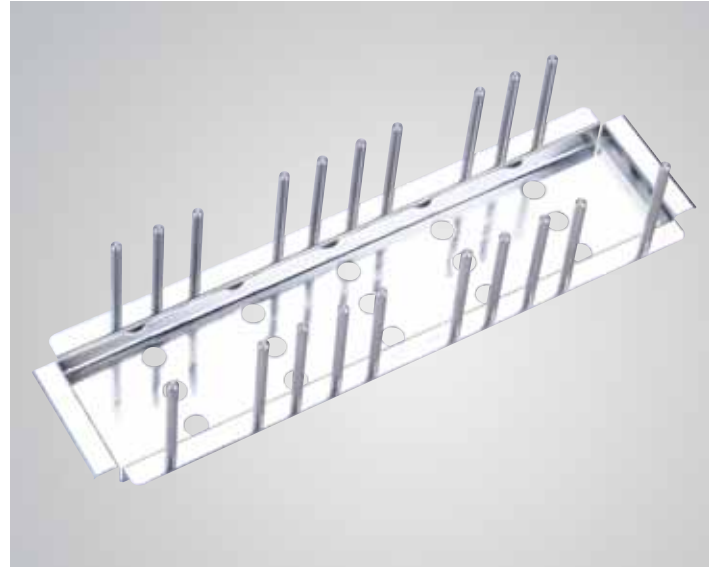
POSILOK™ Instrument Holders

Cat. No.	Size
SU2979	6in x 2-1/2in (15.2cm x 6.3cm)
SU2979-001	8in x 2-1/2in (20.3cm x 6.3cm)
SU2979-004	8in x 5in (20.3cm x 12.7cm)
SU2979-006	10in x 2-1/2in (25.4cm x 6.3cm)
SU2979-010	10in x 5in (25.4cm x 12.7cm)
SU2979-002	12in x 2-1/2in (30.5cm x 6.3cm)
SU2979-005	12in x 5in (30.5cm x 12.7cm)
SU2979-007	14in x 2-1/2in (35.6cm x 6.3cm)
SU2979-014	14in x 5in (35.6cm x 12.7cm)
SU2979-003	16in x 2-1/2in (40.6cm x 6.3cm)
SU2979-016	16in x 5in (40.6cm x 12.7cm)



WEISENBACH Sterile Forceps Holders

Cat. No.	Length
SU2974	6in (15.2cm)
SU2975	12in (30.5cm)



KIDD Instrument Rack

Holds forceps sorted by type and size. Holds forceps jaws open. Prevents instruments from touching shelf or table surface. Electropolishing and matte finish.

Cat. No.	Size
SU2985	15-3/8in x 3-3/4in (39cm x 9.5cm)



HAGIE T-Stack Instrument Rack

Holds up to 12 similar ring-handled forceps.

Cat. No.
SU2980



TURCHIK Instrument Holder

Simple and convenient spring holder for straight instruments.

Cat. No.
RH2685









For more information about Genesis containers, contact your V. Mueller sales representative, call Customer Service at (02) 8635-9747.

