

BENEFITS TO YOU



Lightweight



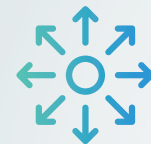
Silent



24/7 therapy



Easy to use



Full mobility



Comfortable



Pocket Size



Allows showering



NATROX® AND SHOWERING

The dressing used to cover the ODS needs to be waterproof to allow showering

Disconnect the ODS from the device

The device should be placed in a safe area where it won't get splashed

Go for a shower, avoid direct exposure of the dressing to water



FREQUENTLY ASKED QUESTIONS



Why has my wound fluid increased?

Oxygen increases wound healing, as part of this process some people experience a rise in wound fluid. If you feel a build-up of fluid below your dressing or your dressing starts to leak it is important to let your clinical team know.

Will NATROX® cause any pain or discomfort?

NATROX® should not cause any pain or discomfort, some people report reduced wound pain when using NATROX®. If you experience any changes to your pain it is important to inform your clinical team.

Does NATROX® have any side effects?

There are no known side effects or risks currently associated with the use of NATROX®. However, if you experience any issues it is important to inform your clinical team.

How will I know if NATROX® stops working and what should I do?

If the green light on the NATROX® OG is flashing then oxygen is flowing, if the light stops flashing then:

- A) Check the battery hasn't become dislodged
- B) Swap the batteries over (a fully charged battery should last at least 24 hours)

If the light doesn't start to flash again contact your clinical team.



For more information, visit us at:
www.natroxwoundcare.com

Inotec AMD @Natroxwoundcare Natroxwoundcare



PL_03/20 (V3)

Inotec AMD LTD Ground Floor Unit 7340, Building 7300 | Cambridge Research Park
Waterbeach | Cambridge | Cambridgeshire | CB25 9PD | United Kingdom



PATIENT INFORMATION LEAFLET

NATROX®
Oxygen Wound Therapy



Designed simply to **HEAL**
WOUNDS

WHAT IS NATROX®?

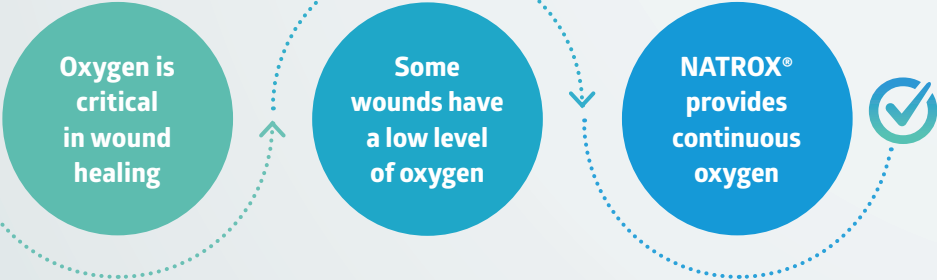


NATROX® is a small portable device that generates oxygen which is delivered directly to the wound to help wound healing.



Your healthcare professional has chosen **NATROX® Oxygen Wound Therapy** because they think your wound might need extra oxygen to help the wound healing process.

WHY NATROX®?



HOW NATROX® WORKS?



NATROX® generates oxygen, and delivers it through a thin flexible tube to the **Oxygen Delivery System (ODS)** which is in direct contact with the wound surface.

OXYGEN GENERATOR (OG)

- Takes oxygen from the air
- Green flashing light indicates oxygen is flowing



BATTERIES

- Battery slides into the OG
- When Charging:**
- Amber flashing light indicates the battery is charging
 - Solid amber light indicates the battery is fully charged



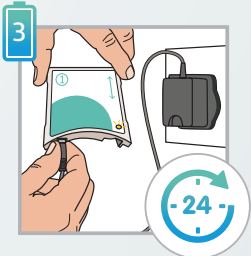
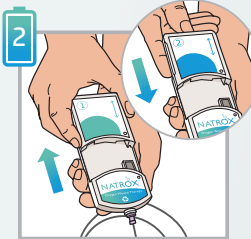
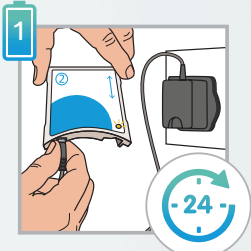
OXYGEN DELIVERY SYSTEM (ODS)

- Delivers oxygen to your wound
- Covered with a normal wound dressing

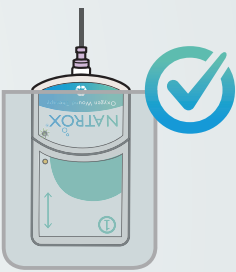
WHAT DO YOU NEED TO KNOW?

- A**lways have a battery on charge
- B**attery needs to be changed every 24 hours
- C**heck the green light is flashing on the OG

CHARGING THE BATTERY



POSITION IN YOUR POCKET



WHAT TO EXPECT

