

Infection Control Apparel

Peace of mind
in all you do.




CardinalHealth™

Designed with your safety in mind

We're here to take care of you the way you take care of others. That's why our Infection Control Apparel is engineered to help you keep your clinicians and patients safe every step of the way.

We provide apparel solutions that meet or exceed industry safety standards, including:

- AAMI Level 1 isolation gowns
- AAMI Level 2 isolation gowns
- AAMI Level 3 isolation gowns
- AAMI Level 4 protective gowns

Cardinal Health™ Infection Control Apparel stays at the forefront of the regulatory environment, continuously evaluating and improving product offering so that your facility can comply with industry best practices.



What's inside

Infection control guide	3
AAMI Level guide	4
Style guide	5
AAMI Level gowns	6-9
Full-back isolation gowns	10-11
Open-back protective gowns	12-14
Chemotherapy apparel	15-17
Non-sterile procedure gowns	18
Coveralls	19
Scrubwear and aprons	20
Lab coats and lab jackets	21-23

Infection control guide



Safety starts well before the moment a clinician enters the patient’s room. Use the setting usage key and materials descriptions as a guide to select gowns and other apparel, so you can provide the right options for every situation.

Setting usage guidelines

The icons represented below should be used as a guideline in making gown selections for various needs and areas of your facility. Additionally, utilize the AAMI chart (see page 4) for the appropriate level gown.

- | | | |
|-----------------------|---------------------|-------------|
| Standard Precautions* | Food Service | Maintenance |
| Contact Precautions | Intensive Care Unit | Nursing |
| Emergency | Lab | Visitors |

* Per CDC Guidelines on Standard Precautions, the use of isolation gowns is indicated for some interactions between healthcare workers and patients. Transmission-Based Precautions (Contact, Droplet, and Airborne Precautions) are always used in addition to Standard Precautions. Isolation gowns are indicated for use whenever Contact Precautions are in effect, and may be appropriate when Droplet and/or Airborne Precautions are in effect, depending on the nature of the interaction between the healthcare worker and patient as well as the extent of anticipated blood, body fluid, or pathogen exposure. For more information, visit [cdc.gov](https://www.cdc.gov).

Source: Siegel JD, Rhinehart E, Jackson M, Chiarello L, and the Healthcare Infection Control Practices Advisory Committee, 2007 Guideline for Isolation Precautions: Preventing Transmission of Infectious Agents in Healthcare Settings

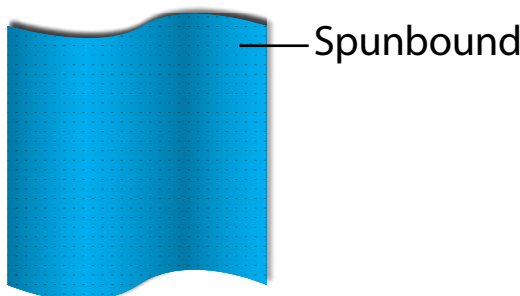


Materials descriptions

Spunbond Polypropylene

Standard, cost-effective and comfortable

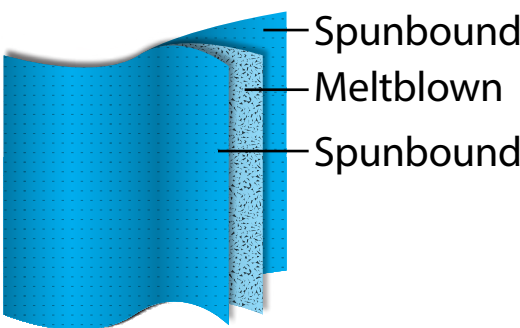
For basic infection control, this non-woven fabric bonds fibers together to form a single layer that is appropriate only for very minimal fluid exposure.



SMS Material

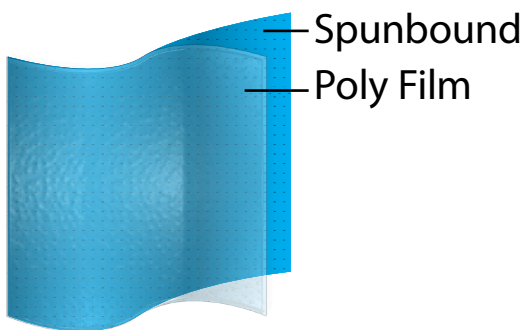
Balanced mix of protection and comfort

Strong and breathable, Spunbond/Meltblown/Spunbond (SMS) is a multi-layer fabric composed of inner layers of meltblown polypropylene between outer layers of spunbond polypropylene that is ideal for extended wear. Light/medium weight SMS is appropriate for low amounts of fluid and heavy weight SMS may be appropriate for moderate contact with fluids.



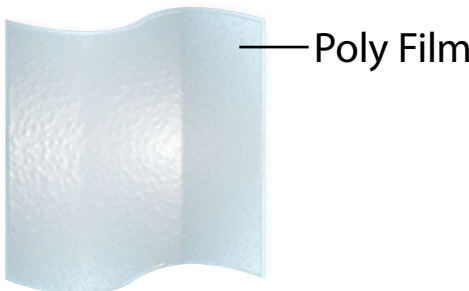
Coated Polypropylene (“Poly-coated”)

Soft, spunbond polypropylene is coated with a layer of polyethylene (plastic) film.



Polyethylene (Plastic) Film

A single layer of polyethylene (plastic) film provides protection at an affordable cost.



AAMI Level guide

We're your source for AAMI compliant gowns. Choose the level you need, based on the green/orange/blue/purple color coding in the following chart.



AAMI PB70 guidelines

ANSI/AAMI PB70 Barrier performance	Test method	Test definition		Requirement	Anticipated fluid exposure
AAMI Level 1	Water resistance: Impact penetration AATCC 42	AATCC 42	Measures the resistance of fabrics to the liquid penetration of water by impact	Water impact ≤ 4.5 g	Minimal fluid levels
AAMI Level 2	Water resistance: Impact penetration AATCC 42 Water resistance: Hydrostatic pressure AATCC 27	AATCC 42 AATCC 127	Measures the resistance of fabrics to the liquid penetration of water by impact Measures the resistance of fabrics to the liquid penetration of water by impact under constant and increasing hydrostatic pressure	Spray impact ≤ 1.0 g Hydrostatic Pressure ≥ 20 cm	Low fluid levels
AAMI Level 3	Water resistance: Impact penetration AATCC 42 Water resistance: Hydrostatic pressure AATCC 27	AATCC 42 AATCC 127	Measures the resistance of fabrics to the liquid penetration of water by impact Measures the resistance of fabrics to the liquid penetration of water by impact under constant and increasing hydrostatic pressure	Spray impact ≤ 1.0 g Hydrostatic pressure ≥ 50 cm	Moderate fluid levels
AAMI Level 4	ASTM F1671, Standard Test Method for Resistance of Materials Used in Protective Clothing to Penetration by Blood-Borne Pathogens Using Phi-X174 Bacteriophage Penetration as a Test System	ASTM F1671	Measures the resistance of materials used in protective clothing to penetration by blood borne pathogens using a surrogate microbe under conditions of continuous liquid contact.	Pass	High fluid levels

Association for the Advancement of Medical Instrumentation. **Liquid Barrier Performance and Classification of Protective Apparel and Drapes Intended for use in Health Care Facilities.** ANSI/AAMI PB70:2012. Arlington, VA: AAMI.



Style guide

Key features like wrist, neck and back style can vary from gown to gown.
Use this style guide to understand the differences.

Wrist style options

Elastic wrist



Hybrid elastic wrist and thumbhook



Thumbhook



Knit cuff



Neck style options

Tape tab



Tie-neck



Over-the-head



Hook and loop



Back style options

Open-back*



Full-back



Overlapping back panels and side ties (full-back)



* This photo represents an example of an open-back gown, but does not represent the style of all open-back gowns



AAMI Level gowns

AAMI Level 1 gowns

AAMI Level 1 lightweight isolation gown
Soft and breathable SMS material for maximum comfort.

AAMI Level 1 SP CP 

Cat. No.	Size/description	Qty.
Tape tab neck, elastic wrists, flat pack		
AT2237-BD	Universal, yellow	10/pk, 100/cs
AT2237-XL	X-large, yellow	10/pk, 100/cs



AAMI Level gowns

AAMI Level 2 gowns

Over-the-head AAMI Level 2 isolation gown
Comfortable, strong and durable SMS material for demanding situations.

AAMI Level 2

SP

CP

Cat. No.	Size/description	Qty.
Over-the-head, elastic/thumbhook wrist, flat pack		
AT4498-BD	Universal, yellow	10/pk, 100/cs
AT4498-XL	X-large, yellow	10/pk, 100/cs
AT4488-XL	X-large, yellow, overlapping back panels	10/pk, 100/cs
AT4488B-XL	X-large, yellow, overlapping back panels	25ea/bag, 4 bag/cs
AT4488-2XL	2X-large, yellow, overlapping back panels	10/pk, 100/cs

AAMI Level 2 medium weight isolation gown
Comfortable, strong and durable SMS material for demanding situations.

AAMI Level 2

SP

CP

Cat. No.	Size/description	Qty.
Tape tab neck, elastic wrists, flat pack		
AT4437-BD	Universal, yellow	10/pk, 100/cs
AT4437-XL	X-large, yellow	10/pk, 100/cs
Neck tie-bands, elastic wrists, flat pack		
AT4450-BD	Universal, yellow	10/pk, 100/cs
AT4450-XL	X-large, yellow	10/pk, 100/cs



AAMI Level gowns

AAMI Level 3 gowns

AAMI Level 3 heavyweight isolation gown with 510(k) clearance*
Heavy SMS material provides moderate fluid protection.

AAMI Level 3

SP

CP

+

ICU

👤

Cat. No.	Size/description	Qty.
Tape tab neck, elastic wrists, flat pack		
AT6100	Universal, yellow	10/pk, 100/cs
AT6100-XL	X-large, yellow	10/pk, 100/cs
AT6200	Universal, blue	10/pk, 100/cs
AT6200-XL	X-large, blue	10/pk, 100/cs

* FDA now requires non-sterile gowns with moderate or high fluid claims, which includes AAMI Level 3, to have 510(k) clearance.



AAMI Level gowns

AAMI Level 4 gowns

First to Market AAMI Level 4 protective gown with 510(k) clearance*

This over-the-head AAMI 4 protective gown is made of blue coated polypropylene material with open-back for breathability and comfort. Coverage on the front and sides provides protection from high fluid levels and blood borne pathogens.

AAMI Level 4		SP	CP
Cat. No.	Size/description	Qty.	
Over-the-head, knit cuffs, flat pack			
4201PG	Universal, blue	10/pk, 100/cs	
4203PG	2X-large, blue	10/pk, 100/cs	
Over-the-head, thumbhooks			
4211PG	Universal, blue	10/pk, 100/cs (flat pack)	
42110PG	Universal, blue	6/bx, 5 bx/cs	
4213PG	2X-large, blue	10/pk, 100/cs (flat pack)	

* The FDA now requires non-sterile gowns with moderate or high fluid claims, which includes AAMI Level 4, to have 510(k) clearance.



or



Full-back isolation gowns

Spunbond polypropylene

Basic spunbond polypropylene gown

Comfort and protection for use in very minimal fluid settings. Generously sized for greater coverage and flexibility.



Cat. No.	Size/description	Qty.
Neck and waist ties, elastic wrists, flat pack		
1100PG	Universal, yellow	10/pk, 100/cs
1101PG	X-large, yellow	10/pk, 100/cs
1200PG	Universal, blue	10/pk, 100/cs

KENDALL™ durable spunbond polypropylene gown

Durable, breathable spunbond polypropylene provides coverage and protection



Cat. No.	Size/description	Qty.
Hook and loop neck, waist ties, knit cuffs		
CT5000	Medium, blue	30/cs
CT5100	Large, blue	30/cs
CT5101	X-Large, blue	30/cs
CT5102	2X-Large, blue	30/cs



Full-back isolation gowns

SMS

Tri-layer SMS isolation gown
Lightweight material; generously sized for greater coverage and flexibility. For use in minimal fluid settings.

SP CP 

Cat. No.	Size/description	Qty.
Neck and waist ties, elastic wrists, flat pack		
2100PG	Universal, yellow	10/pk, 100/cs
2101PG	X-large, yellow	10/pk, 100/cs
Neck and waist ties, elastic wrists, flat pack		
2200PG	Universal, blue	10/pk, 100/cs
2201PG	X-large, blue	10/pk, 100/cs



Poly-coated

Poly-coated full-back isolation gown
Made of coated-polypropylene material for comfort and protection.

SP CP 

Cat. No.	Size/description	Qty.
Neck and waist ties, knit cuffs, flat pack		
7100PG	Universal, yellow	10/pk, 100/cs
7101PG	X-large, yellow	10/pk, 100/cs
Neck and waist ties, knit cuffs, flat pack		
7300PG	Universal, white	10/pk, 100/cs
7301PG	X-large, white	10/pk, 100/cs



Open-back protective gowns

Spunbond polypropylene

Over-the-head spunbond protective gown

Lightweight spunbond polypropylene provides comfort and protection in very minimal fluid settings.



Cat. No.	Size/description	Qty.
Over-the-head, thumbhooks		
1110PG	Universal, yellow	1 ea/bag, 100 bags/cs
1111PG	X-large, yellow	10/pk, 100/cs (flat pack)



Open-back protective gowns

SMS

Over-the-head SMS gown
Lightweight, breathable SMS material provides protection in minimal fluid settings.

SP CP 

Cat. No.	Size/description	Qty.
Over-the-head, thumbhooks		
2110PG	Universal, yellow	1 ea/bag, 100 bags/cs
Over-the-head, hybrid elastic/thumbhook wrist		
2111PG	X-large, yellow	10/pk, 100/cs (flat pack)

Over-the-head medium weight SMS gown
Medium weight, breathable SMS material provides protection in low fluid settings.

SP CP 

Cat. No.	Size/description	Qty.
Over-the-head, hybrid elastic/thumbhook wrist, flat pack		
3110PG	Universal, yellow	10/pk, 100/cs
3111PG	X-large, yellow	10/pk, 100/cs



Open-back protective gowns

Poly-coated

Over-the-head poly-coated gown
Made of yellow coated-polypropylene material for comfort and protection.

SP CP 


Cat. No.	Size/description	Qty.
Over-the-head, thumbhooks		
7211PG	Universal, yellow	10/pk, 100/cs



Open-back protective gowns

Polyethylene Film

Premium over-the-head plastic film gown
Blue polyethylene film material provides protection at an affordable price.

SP CP  

Cat. No.	Size/description	Qty.
Over-the-head, thumbhooks		
5210PG	Universal, blue	15/bx, 5 bx/cs, 75/cs
5211PG	Universal, blue	1 ea/bag, 100 bags/cs (bulk pack)
5213PG	X-large, blue	15/bx, 5 bx/cs, 75/cs



Chemotherapy apparel

Our chemotherapy gowns are engineered to provide users with protection from the potential hazards associated with handling chemotherapy agents.

- Poly-coated material for durability and protection
- Lightweight, with closed-back and open-back options, secured with waist ties for maximum comfort
- Low-linting material helps to provide a clean environment
- Long sleeves with knit cuffs provide added comfort



Chemotherapy apparel

Poly-coated SMS chemotherapy gowns

The material used in these gowns was tested against the following 11 chemotherapy drugs per ASTM F739-12, and no breakthrough was observed during test duration of 480 minutes based on average standardized breakthrough time*:

- Carmustine
 - Cisplatin
 - Cyclophosphamide
 - Dacarbazine
 - Doxorubicin Hydrochloride
 - Etoposide
- Fluorouracil
 - Mitomycin C
 - Paclitaxel
 - Thiotepa
 - Vincristine Sulfate



Cat. No.	Size/description	Qty.
Neck and waist ties, knit cuffs, flat pack		
8200CG	Universal, blue	10/pk, 100/cs
8201CG	X-large, blue	10/pk, 100/cs

* The material in these gowns has been tested against the chemotherapy drugs listed above per ASTM F739-12 and no permeation was detected at either the minimum detectable permeation or 0.1 µg/cm²/min



Chemotherapy apparel

ChemoPlus™ poly-coated chemotherapy apparel

The material used in these gowns was tested against the following 12 chemotherapy drugs per ASTM F739-12, and no breakthrough was observed during test duration of 480 minutes based on average standardized breakthrough times*.

- Carmustine
 - Cisplatin
 - Cyclophosphamide
 - Dacarbazine
- Doxorubicin Hydrochloride
 - Etoposide
 - Fluorouracil
 - Methotrexate
- Mitomycin C
 - Paclitaxel
 - Thiotepa
 - Vincristine Sulfate



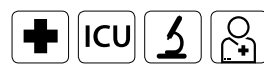
Cat. No.	Size/description	Qty.
Full-back, hook and loop neck, waist ties, knit cuffs		
CT5502	Medium, blue	30/cs
CT5503	Large, blue	30/cs
CT5504	X-large, blue	30/cs
CT5505	2X-large	30/cs
Open-back, hook and loop neck, waist ties, knit cuffs		
DP5003G	Medium, blue	24/cs
DP5001G	Large, blue	24/cs
DP5002G	X-large, blue	24/cs
DP5004G	2X-large, blue	24/cs
ChemoPlus™ protective sleeves		
CT5500	Universal, poly-coated sleeves	100/cs

* The material in these gowns has been tested against the chemotherapy drugs listed above per ASTM-F739-12 and no permeation was detected at either the minimum detectable permeation or 0.1µ/cm2/min



Non-sterile procedure gowns

Non-sterile procedure gowns
Designed specifically for non-sterile procedures, these gowns are constructed from a mid-weight SMS fabric.



Cat. No.	Size/description	Qty.
Hook-and-loop neck closure, knit cuffs, waist belt		
3200PG	Universal, blue	10/pk, 60/cs
3201PG	X-large, blue	10/pk, 60/cs



Coveralls

These durable, disposable coveralls are constructed from tri-layer SMS fabric and are available with open or elastic cuffs and ankles. Coveralls work well for staff or visitor use.

Medium weight coveralls with open cuffs and ankles



Cat. No.	Color	Size	Qty.
Zip front, open cuffs and ankles			
1200CV	Blue	Universal	24/cs
1201CV	Blue	X-large	24/cs
1202CV	Blue	2X-large	24/cs



Heavy weight coveralls with elastic cuffs and ankles



Cat. No.	Color	Size	Qty.
Zip front, elastic cuffs and ankles			
2200CV	White	Universal	24/cs
2201CV	White	X-large	24/cs
2202CV	White	2X-large	24/cs
22003CV	White	3X-large	24/cs
22004CV	White	4X-large	24/cs



Scrubs and aprons

Our blue unisex scrubs are made of a high-quality tri-layer SMS fabric that combines strength with the softness and comfort of linen. Short-sleeve tops feature an easy-to-don V-neck and two large front pockets. Pants are constructed with elastic waists and one back right pocket.

Scrubs

Short sleeve SMS top with v-neck

Cat. No.	Color	Size	Qty.
23502T	Blue	Medium	60/cs
23503T	Blue	Large	60/cs
23504T	Blue	X-large	60/cs
23505T	Blue	2X-large	60/cs
23506T	Blue	3X-large	60/cs

SMS pants with elastic waist

Cat. No.	Color	Size	Qty.
23602PE	Blue	Medium	60/cs
23603PE	Blue	Large	60/cs
23604PE	Blue	X-large	60/cs
23605PE	Blue	2X-large	60/cs
23606PE	Blue	3X-large	60/cs

Aprons

Heavyweight cystoscopy apron

Cat. No.	Color	Size	Qty.
3175	Blue	Universal	20/bx, 4 bx/cs



Lab coats and lab jackets

Standard lab coats and jackets

Our standard lab coats and jackets are comfortable while still protecting from low fluid levels. All standard coats include multiple pockets, a variety of sizes and a choice of two colors.

Lab coats with traditional collars

Basic spunbond polypropylene lab coats with traditional collar and knit cuffs

Cat. No.	Color	Size	Qty.
Snap front, traditional collar, knit cuffs			
1301LC	White	Medium	25/cs
1302LC	White	Large	25/cs
1303LC	White	X-large	25/cs
1304LC	White	2X-large	25/cs

SMS lab coats with traditional collar and knit cuffs

Cat. No.	Color	Size	Qty.
Snap front, traditional collar, knit cuffs			
2301LC	White	Medium	25/cs
2302LC	White	Large	25/cs
2303LC	White	X-large	25/cs
2304LC	White	2X-large	25/cs
2200LC	Blue	Small	25/cs
2201LC	Blue	Medium	25/cs
2202LC	Blue	Large	25/cs
2203LC	Blue	X-large	25/cs
2204LC	Blue	2X-large	25/cs
2205LC	Blue	3X-large	25/cs
2206LC	Blue	4X-large	25/cs



Lab coats and lab jackets

Standard lab coats and jackets (continued)

Our standard lab coats and jackets are comfortable while still protecting from low fluid levels. All standard coats include multiple pockets, a variety of sizes and a choice of two colors.

Lab coats and jackets with knit collars

SMS lab coats with knit collar and knit cuffs

Cat. No.	Color	Size	Qty.
Snap front, knit collar, knit cuffs			
2310LC	White	Small	25/cs
2311LC	White	Medium	25/cs
2312LC	White	Large	25/cs
2313LC	White	X-large	25/cs
2314LC	White	2X-large	25/cs
2315LC	White	3X-large	25/cs
2316LC	White	4X-large	25/cs

SMS lab jackets with knit collar and knit cuffs

Cat. No.	Color	Size	Qty.
Snap front, knit collar, knit cuffs			
2299LJ	White	Small	25/cs
2300LJ	White	Medium	25/cs
2301LJ	White	Large	25/cs
2302LJ	White	X-large	25/cs
2303LJ	White	2X-large	25/cs
2304LJ	White	3X-large	25/cs
2305LJ	White	4X-large	25/cs
2199LJ	Blue	Small	25/cs
2200LJ	Blue	Medium	25/cs
2201LJ	Blue	Large	25/cs
2202LJ	Blue	X-large	25/cs
2203LJ	Blue	2X-large	25/cs
2204LJ	Blue	3X-large	25/cs
2205LJ	Blue	4X-large	25/cs



Lab coats and lab jackets

Premium lab coats and lab jackets

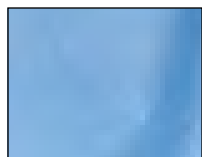
Our premium lab coats and jackets are soft, breathable and comfortable while still protecting from low fluid levels with a three-layer SMS fabric. All premium coats and jackets have three pockets and seven color options.

Hip-length lab jackets

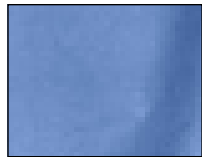
Color/Size	X-small	Small	Medium	Large	X-large	2X-large	3X-large
Ceil Blue	C3630CBXS	C3630CBS	C3630CBM	C3630CBL	C3630CBXL	C3630CB2XL	C3630CB3XL
Medical Blue	C3630MBXS	C3630MBS	C3630MBM	C3630MBL	C3630MBXL	C3630MB2XL	C3630MB3XL
Purple	C3630PPXS	C3630PPS	C3630PPM	C3630PPL	C3630PPXL	C3630PP2XL	C3630PP3XL
Raspberry	C3630RBXS	C3630RBS	C3630RBM	C3630RBL	C3630RBXL	C3630RB2XL	C3630RB3XL
Sky Blue	C3630SBXS	C3630SBS	C3630SBM	C3630SBL	C3630SBXL	C3630SB2XL	C3630SB3XL
Teal	C3630TEXS	C3630TES	C3630TEM	C3630TEL	C3630TEXL	C3630TE2XL	C3630TE3XL
White	C3630WHXS	C3630WHS	C3630WHM	C3630WHL	C3630WHXL	C3630WH2XL	C3630WH3XL

Knee-length lab coats

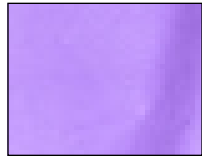
Color/Size	X-small	Small	Medium	Large	X-large	2X-large	3X-large	4X-large
Ceil Blue	C3660CBXS	C3660CBS	C3660CBM	C3660CBL	C3660CBXL	C3660CB2XL	C3660CB3XL	C3660CB4XL
Medical Blue	C3660MBXS	C3660MBS	C3660MBM	C3660MBL	C3660MBXL	C3660MB2XL	C3660MB3XL	
Purple	C3660PPXS	C3660PPS	C3660PPM	C3660PPL	C3660PPXL	C3660PP2XL	C3660PP3XL	
Raspberry	C3660RBXS	C3660RBS	C3660RBM	C3660RBL	C3660RBXL	C3660RB2XL	C3660RB3XL	
Sky Blue	C3660SBXS	C3660SBS	C3660SBM	C3660SBL	C3660SBXL	C3660SB2XL	C3660SB3XL	
Teal	C3660TEXS	C3660TES	C3660TEM	C3660TEL	C3660TEXL	C3660TE2XL	C3660TE3XL	
White	C3660WHXS	C3660WHS	C3660WHM	C3660WHL	C3660WHXL	C3660WH2XL	C3660WH3XL	C3660WH4XL



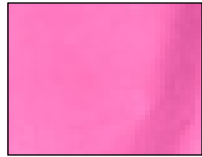
Ceil Blue



Medical Blue



Purple



Raspberry



Sky Blue



Teal



White



Your apparel solution for staff safety

For more information or to order, Contact your Lifelink, Inc. sales representative. Call 02 86359747.



© 2019 Cardinal Health. All rights reserved. CARDINAL HEALTH, the Cardinal Health LOGO, KENDALL, CHEMOPLUS and ESSENTIAL TO CARE are trademarks of Cardinal Health and may be registered in the US and/or in other countries. All other marks are the property of their respective owners. Lit. No. 2GM19-1033912 (10/2019)