

HINTS AND TIPS

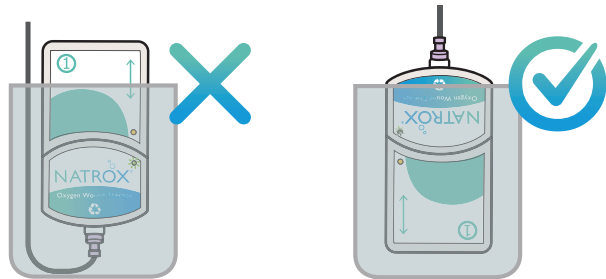


- A** Place the ODS white side down
- B** Consider the position of the tubing for optimum patient comfort and check any pressure points
- C** Check the green light is flashing on the OG



WHAT TO REMIND PATIENTS

- D** Don't overtighten the twist and lock connector between the OG and the ODS
- E** Change the battery every 24 hours
- F** Always check tubing is not occluded



NATROX[®]
Oxygen Wound Therapy

For more information,
visit us at:
www.natroxwoundcare.com

Inotec AMD @Natroxwoundcare Natroxwoundcare



CL_03/20 (V1)

Inotec AMD LTD Ground Floor Unit 7340, Building 7300 | Cambridge Research Park
Waterbeach | Cambridge | Cambridgeshire | CB25 9PD | United Kingdom



CLINICIAN INFORMATION LEAFLET

NATROX[®] Oxygen Wound Therapy



PATIENT NAME:

DIAGNOSIS:

RATIONALE FOR NATROX[®]:

SECONDARY DRESSING:

DRESSING CHANGE FREQUENCY:

REVIEW DATE:

CLINIC CONTACT:



Designed simply to **HEAL**
WOUNDS

INTRODUCING NATROX®

HOW TO APPLY NATROX®

WHAT TO EXPECT WITH NATROX®



NATROX® Oxygen Wound Therapy is a medical device that delivers pure humidified oxygen direct to the wound bed through a thin flexible tube to the Oxygen Delivery System (ODS).

OXYGEN GENERATOR (OG)

- Generates moist oxygen from the atmosphere through electrolysis
- Green flashing light indicates oxygen is flowing



BATTERIES

- Battery slides into the OG

When Charging:

- Amber flashing light indicates the battery is charging
- Solid amber light indicates the battery is fully charged

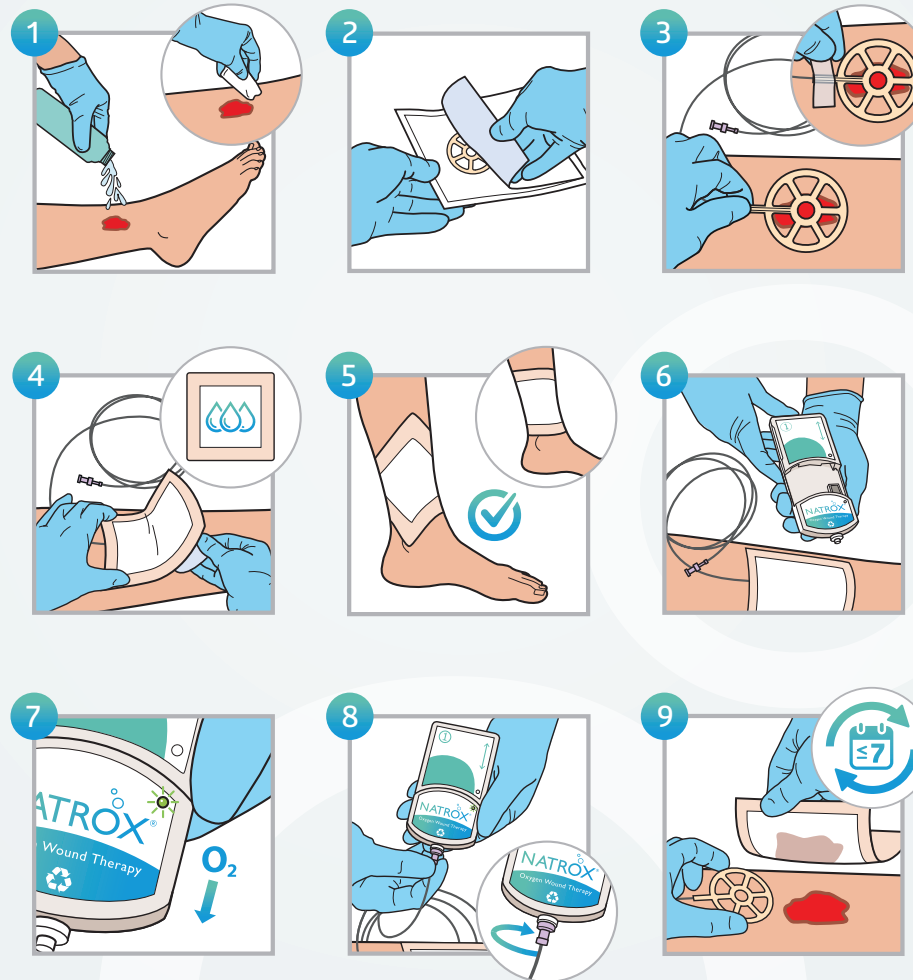


OXYGEN DELIVERY SYSTEM (ODS)

- Delivers oxygen to the wound
- Covered with a normal wound dressing



Always refer to the **Instructions for Use (IFU)** prior to any application of the NATROX® Oxygen Wound Therapy.



Yu J. et al (2016) Topical oxygen therapy results in complete wound healing in diabetic foot ulcers. Wound Repair and Regenerations. 24 1066-1072

Watch the full **NATROX®** application video